

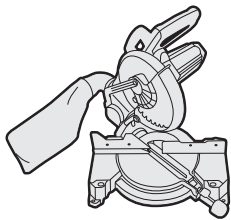


# AUSTRALIAN INTERNATIONAL DECKING INSTALLATION GUIDE





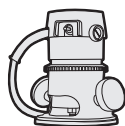
## TOOLS NEEDED



Mitre saw blade  
(254 mm—305 mm.  
40 teeth or more)



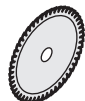
Trex groove  
router bit



Trex groove cutter



Standard power drill

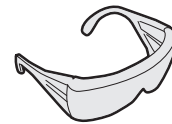


Carbide-tipped  
blades

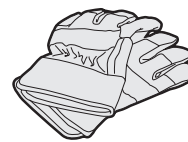
## SAFETY



Long sleeves



Safety glasses



Gloves



Dust mask

- Please be sure to follow the temperature suggestions at installation to allow for the expansion and contraction of Trex WPC boards.
- For approved AU spans, refer to <https://au.trex.com/trex-owners/downloads/> and view detailed span tables provided by SOTO Engineering located under Evaluation Service Reports.
- For Trex Railing, Hot Tub, Fire Pit or Lighting installation instructions, and for Care and Cleaning and Physical and Mechanical Properties, visit [www.trex.com](http://www.trex.com) and scroll to the bottom to select your country.

✓ Country
United States
Australia
Austria
Bahrain
Brazil
Canada
Chile
Colombia
Costa Rica
Cyprus
Czech Republic
El Salvador
Fiji
France
Germany
India
Ireland
Israel
Kuwait

COUNTRY

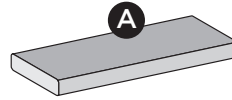
### MORE

[Contact Us](#)  
[Connect](#)  
[Live chat: offline](#)  
[Site Map](#)  
[Privacy Policy](#)  
[Terms Of Use](#)  
[FAQs](#)

# TREX DECKING, FASCIA, AND FASTENING SYSTEMS

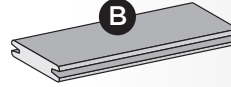
## 25 mm Square-Edge Board

Actual Dimensions:  
140 mm x 25 mm x 5.48 m  
4.8m and 6.1m lengths - special order



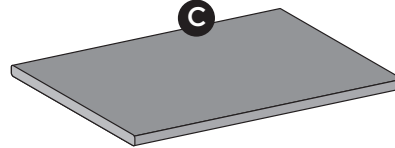
## 25 mm Grooved-Edge Board

Actual Dimensions:  
140 mm x 25 mm x 5.48 m  
4.8m and 6.1m lengths - special order



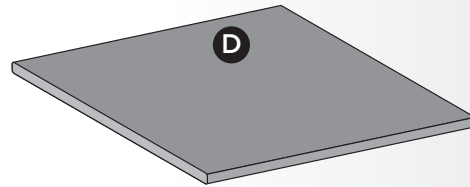
## 14 x 184 mm Fascia

Actual Dimensions:  
184 mm x 14 mm x 3.65m



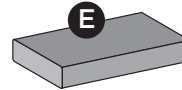
## 14 x 288 mm Fascia (special order only)

Actual Dimensions:  
288 mm x 14 mm x 3.65 m



## 33 mm Square-Edge Board

Actual Dimensions:  
140 mm x 33 mm x 4.88 m



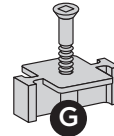
## Trex Universal Start Clip/Elevations Start Clip

Black-coated Stainless Steel (steel grade 302SS)



## Trex Elevations Universal Hidden Fastener (for use with Steel Substructure)

Glass-filled Nylon (steel grade 410SS)

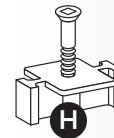


## Trex Universal Hidden Fastener (for use with Timber Substructure) or

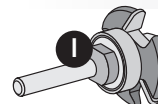
Glass-filled Nylon (steel grade 302SS)

## Trex Universal Hidden Fastener (for use with Aluminum Substructure)

Glass-filled Nylon (steel grade 300 series)

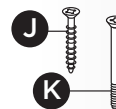


## Router Bit



## Fascia and Deck Screws (Supplied by Distributor)

Supplied by installer



## SPANNING REQUIREMENTS

For approved AU spans, refer to <https://au.trex.com/trex-owners/downloads/> and view detailed span tables provided by SOTO Engineering located under Evaluation Service Reports.

## RECOMMENDED FASTENERS

COMPATIBLE FASTENER MATERIALS FOR USE WITH TREX			
Substrate Material	Carbon Steel w/ 1000 hr. Corrosion- Resistant Coating	Stainless Steel: 410 Series or 1.4003/ 1.4006	Stainless Steel: 300 Series or 1.4301/1.4401/1.4567
Exterior Grade Natural or Treated Wood	Yes***	Yes	Yes**
Plastic or Fiberglass Composites	Yes	Yes	Yes
Aluminum	No	No	Yes
Steel	No	Yes*	Yes#

\*Trex Elevations Universal Hidden Fastener are approved

\*\*Trex Universal Hidden Fasteners are approved

\*Trex Universal Hidden Fasteners for Aluminum Framing are approved

\*\*\*See Trex recommended fasteners for listing of approved decking screws

This guide is for recommended use of fasteners for use with Trex decking. Not all sub-structure materials fall under these categories. In the case of any unique substrate composition of materials, or proprietary composites, consult the substrate manufacturer for recommendations of applicable fasteners.

		Transcend®
RECOMMENDED FASTENERS	DECKING-HIDDEN FASTENERS	
	Trex Hideaway® Universal Hidden Fastener/Trex Elevations Universal Hidden Fastener	X
	FastenMaster® TrapEase 3 Ultimate Composite Deck Screw	X
	Cortex® Concealed Fasteners	X
	Starborn® Pro Plug® System for PVC & Composite (Epoxy Coated & Stainless (2" are approved for sleeper & roof top applications only)	X
	KlevaKlip™ Snap-LOC Clip	X
RECOMMENDED FASTENERS	FASCIA*	
	Starborn® Deckfast® Fascia System - Epoxy Coated* and Headcote® Stainless	X
	SplitStop™ Fascia Screws (uses SplitStop™ Fascia Bit)	X
	Cortex® Hidden Fastening System for Fascia	X

Refer to [au.trex.com](https://au.trex.com), under the Literature/Technical Information for additional recommended fasteners.

Fascia system screws listed above **can only be used with composite fascia profiles**, and cannot be used with standard thickness decking boards used as fascia. Use stainless steel screws near water applications.

**If any condition occurs which is attributable to the use of non-recommended fasteners, such condition shall not be covered under Trex's Limited Warranty.**

FastenMaster®, TrapEase® 3, and Cortex® are registered trademarks of OMG, Inc.

DeckFast® Fascia System screws are registered trademarks of Starborn Industries Inc.

SplitStop™ fascia screws are a registered trademark of Titan Metal Werks, Inc.

**Trex recommends the use of two screws per joist.**

**All recommended screws are designed to be installed flush with decking surface, DO NOT countersink screws.**

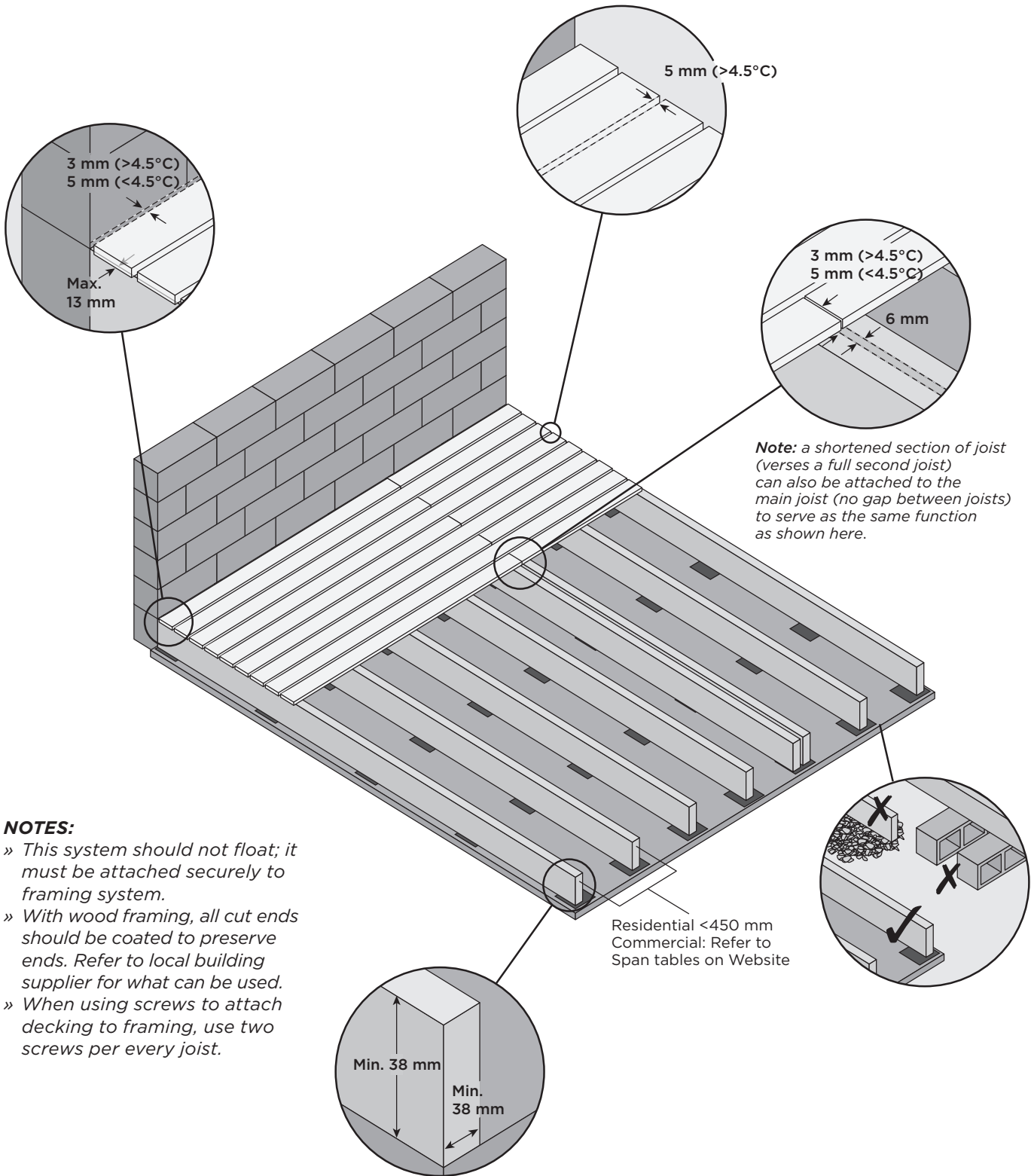
**Use recommended stainless steel screws in any areas near bodies of saltwater.**

### BUSHFIRE SAFETY REGULATIONS

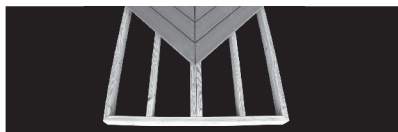
Trex Transcend decking is compliant with bushfire safety regulations for BAL-19 and BAL-29 zones. Refer to <https://au.trex.com/trex-owners/downloads> and view Trex technical bulletin titled BAL Testing Results under Technical Information, for certain requirements in order to meet these regulations. Please also consult your local council or State building codes for your particular geographical requirements.

**NOTE:** Construction methods are always improving. Please refer to [www.au.trex.com](https://www.au.trex.com) for the most up-to-date installation requirements.

# PRESSURE-TREATED FRAMING REQUIREMENTS AND GAPPING



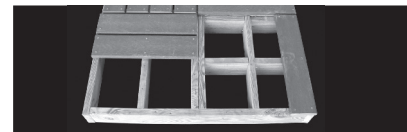
## FRAMING TO SUPPORT PATTERNS



Herringbone Pattern

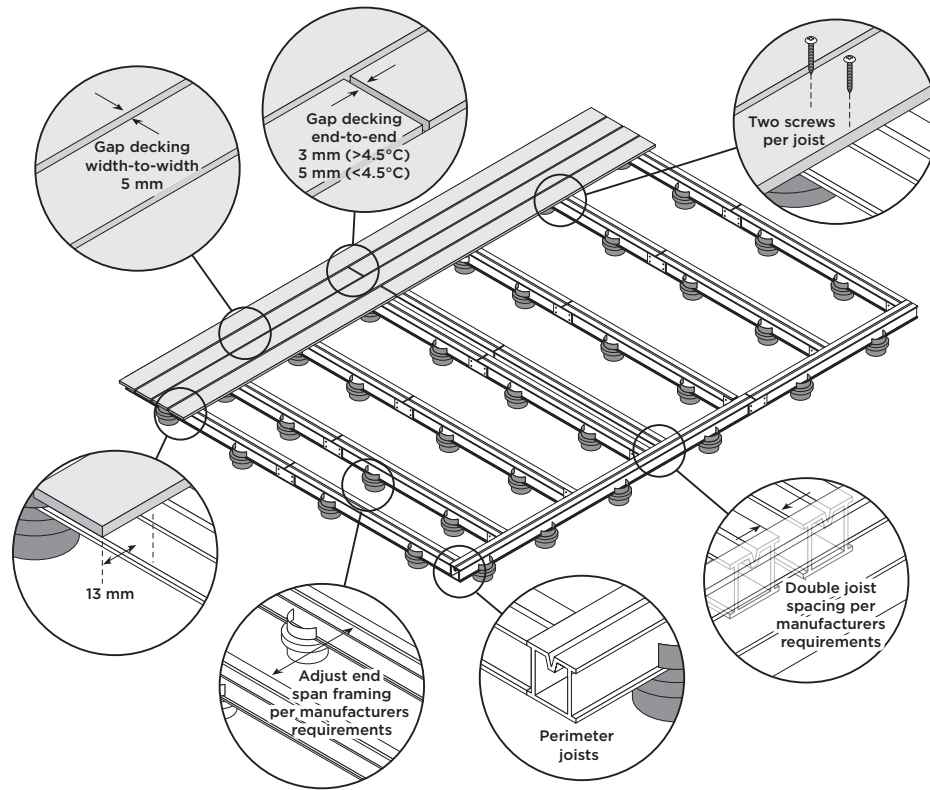


Picture Frame Pattern



Tile Pattern

## METAL FRAMING REQUIREMENTS AND GAPPING



### COMPATIBLE FASTENER MATERIALS FOR USE WITH TREX

Substrate Material	Carbon Steel w/ 1000 hr. Corrosion Resistant Coating	Stainless Steel: 410 Series or 1.4003/1.4006	Stainless Steel: 300 Series or 1.4301/1.4401/1.4567
Exterior Grade Natural or Treated Wood	Yes***	Yes	Yes**
Plastic or Fiberglass Composites	Yes	Yes	Yes
Aluminum	No	No	Yes
Steel	No	Yes*	Yes#

\*Trex Elevations Universal Hidden Fastener are approved

\*\*Trex Universal Hidden Fasteners are approved

# Trex Universal Hidden Fasteners for Aluminum Framing are approved

\*\*\*See Trex recommended fasteners for listing of approved decking screws

This guide is for recommended use of fasteners for use with Trex decking. Not all sub-structure materials fall under these categories. In the case of any unique substrate composition of materials, or proprietary composites, consult the substrate manufacturer for recommendations of applicable fasteners.

#### NOTES:

- » Gapping rules are required when installing Trex decking.
- » When using an aluminum framing system or other type of metal for sleeper systems, follow manufacturer's instructions for proper installation.
- » Depending on loading requirements and/or if installing Trex decking on an angle, framing spacing may need to be adjusted. **See page 4 for Trex requirements.**
- » Depending on type of structure being used, different types of fasteners must be used for attachment. Refer to the chart at right for compatible fasteners based on substrate material being used.
- » When using screws to attach decking to framing, use two screws per every joist.

#### TREX AND STATIC ELECTRICITY

While this is not common, static electricity can occur on walking surfaces in dry climates or in areas where dry winds and dust-borne particles lay on the decking surfaces. Static electricity can build up on occupants walking across any composite decking surface, including Trex, then produce a small static shock if they touch a grounded metal surface such as a railing, door, etc.

This condition can be decreased greatly with the use of a product call ACL Staticide®. Two products tested were General Purpose Staticide® and Heavy Duty Staticide®. Both are effective in greatly reducing static electricity on Trex decking surfaces. Apply full strength, using a mop on a dry decking surface, and allow to dry. No rinsing, no diluting needed. Products are non-toxic, non-flammable, non-staining (will not change the colour of decking surface), completely biodegradable and safe to use. Product is water based and may require a second application after rain or other weather conditions. Over a period of time, the effect of static will dissipate naturally on the decking surface.

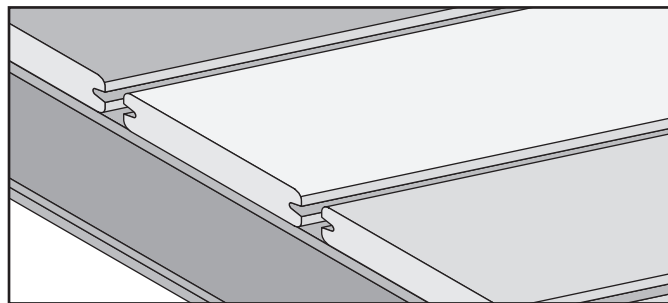
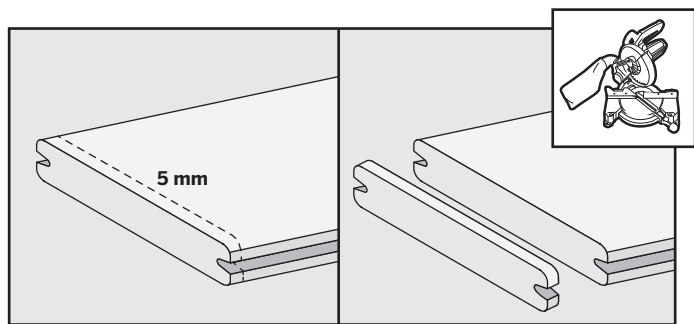
See link for more information on product: [http://www.aclstaticide.com/antistatic\\_coatings.html](http://www.aclstaticide.com/antistatic_coatings.html).

**NOTE:** Construction methods are always improving. Please refer to [www.au.trex.com](http://www.au.trex.com) for the most up-to-date installation requirements.

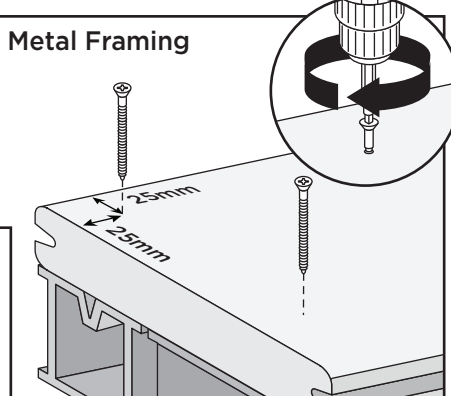
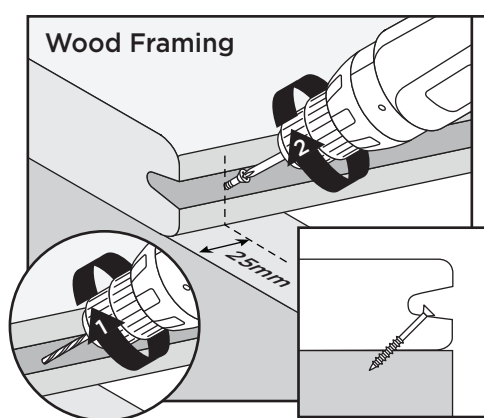
# INSTALLING TREX DECKBOARDS

**IMPORTANT:** You **MUST** clean cut boards on both ends (min. 5 mm).

To ensure an appealing mix of colour tones, mix and match all boards prior to installation. (See inside cover for additional details.)



## Installation Tips for Large Temperature Shifts within 24-hour Period



For wood framing, and if using Trex Universal Hidden Fasteners, pre-drill and toenail an approved screw at an angle in groove at both ends 25mm from board end and center of each board.

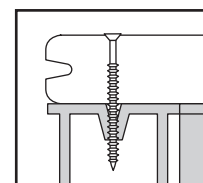
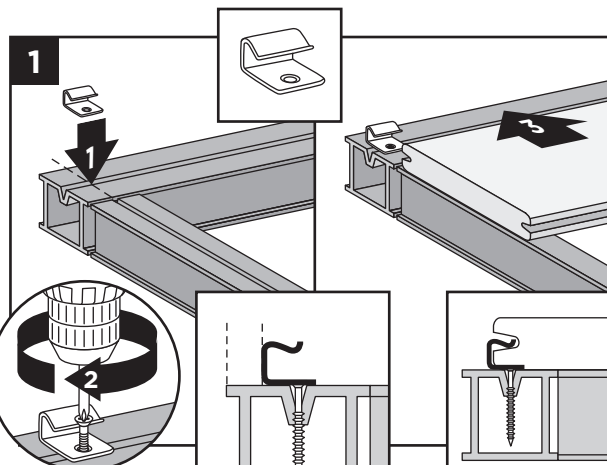
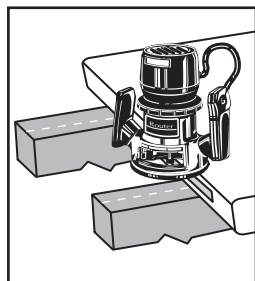
For metal framing, use two approved decking screws at board ends.

## Routing Square Edge Boards for Trex Hideaway Hidden Fasteners

**NOTE:** All Trex square edge profiles can be routed.

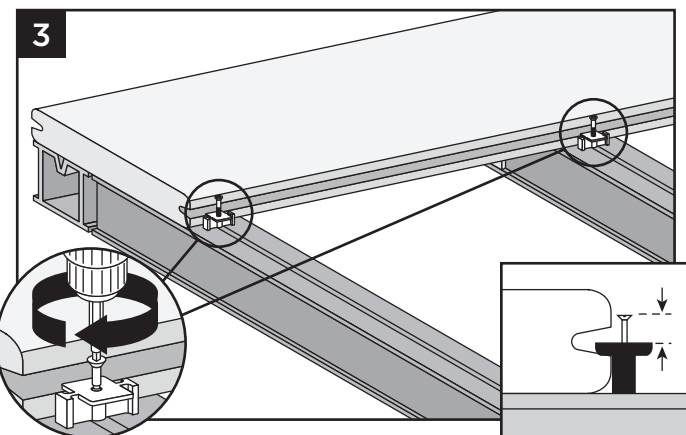
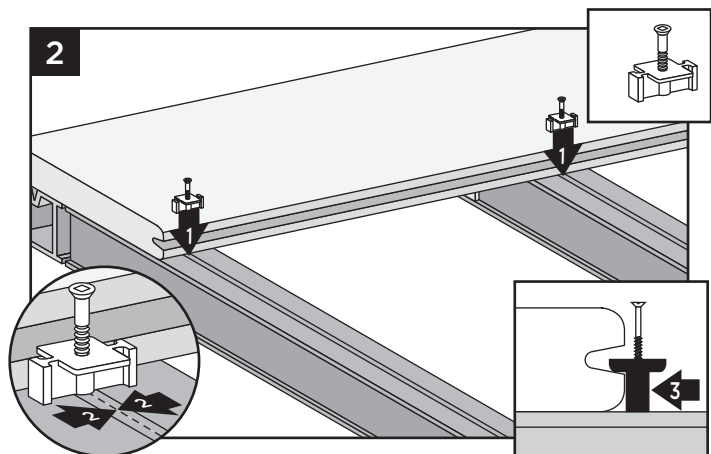
Using a Trex router bit with standard router:

1. Rout from bottom side of board.
2. Rout the entire length of the board, or at every intersection where board is over support joists.



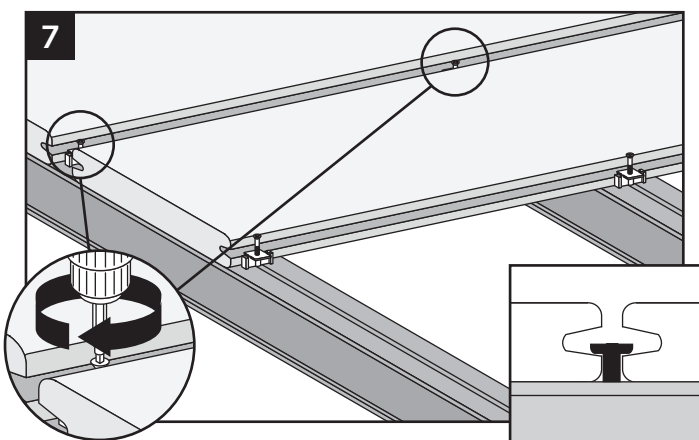
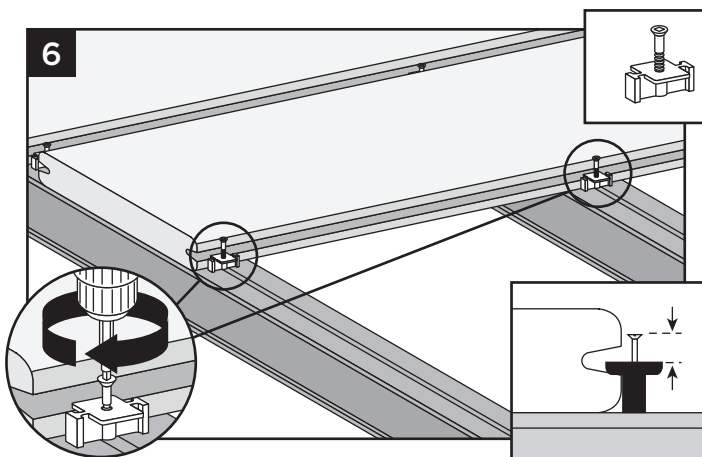
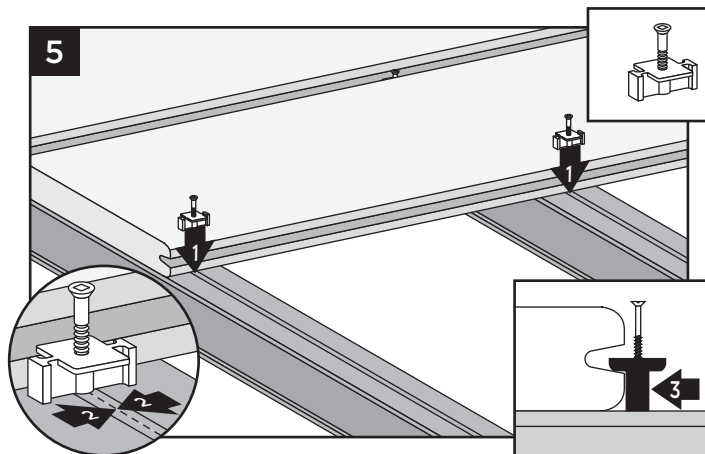
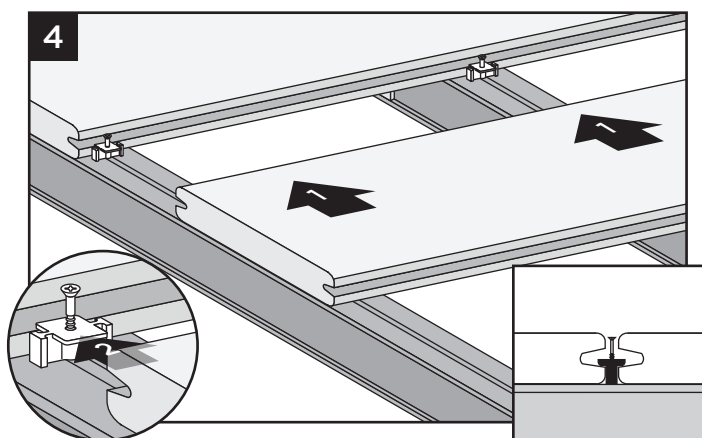
**Optional First Board Installation:**  
(one screw per every metal joist)

\*6mm >4°C 13mm <4°C

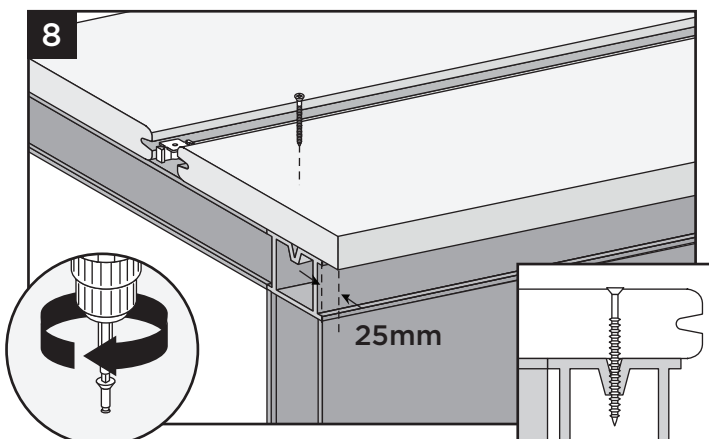




## INSTALLING TREX DECKBOARDS/CONTINUED

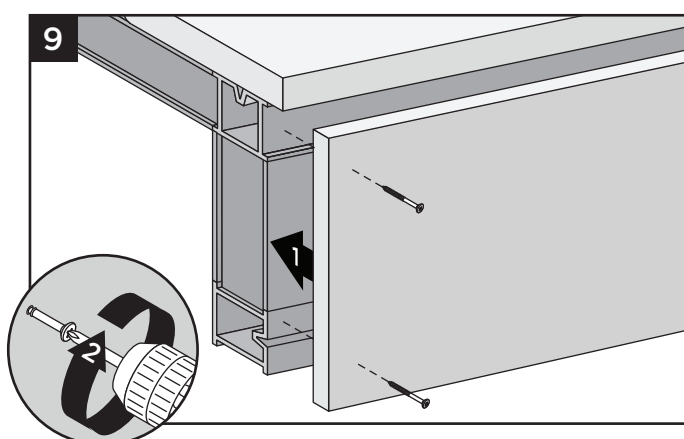


### Installing Last Deck Board (Square-Edge Board Recommended)



Rout one side of square-edge board to use with hidden fasteners.

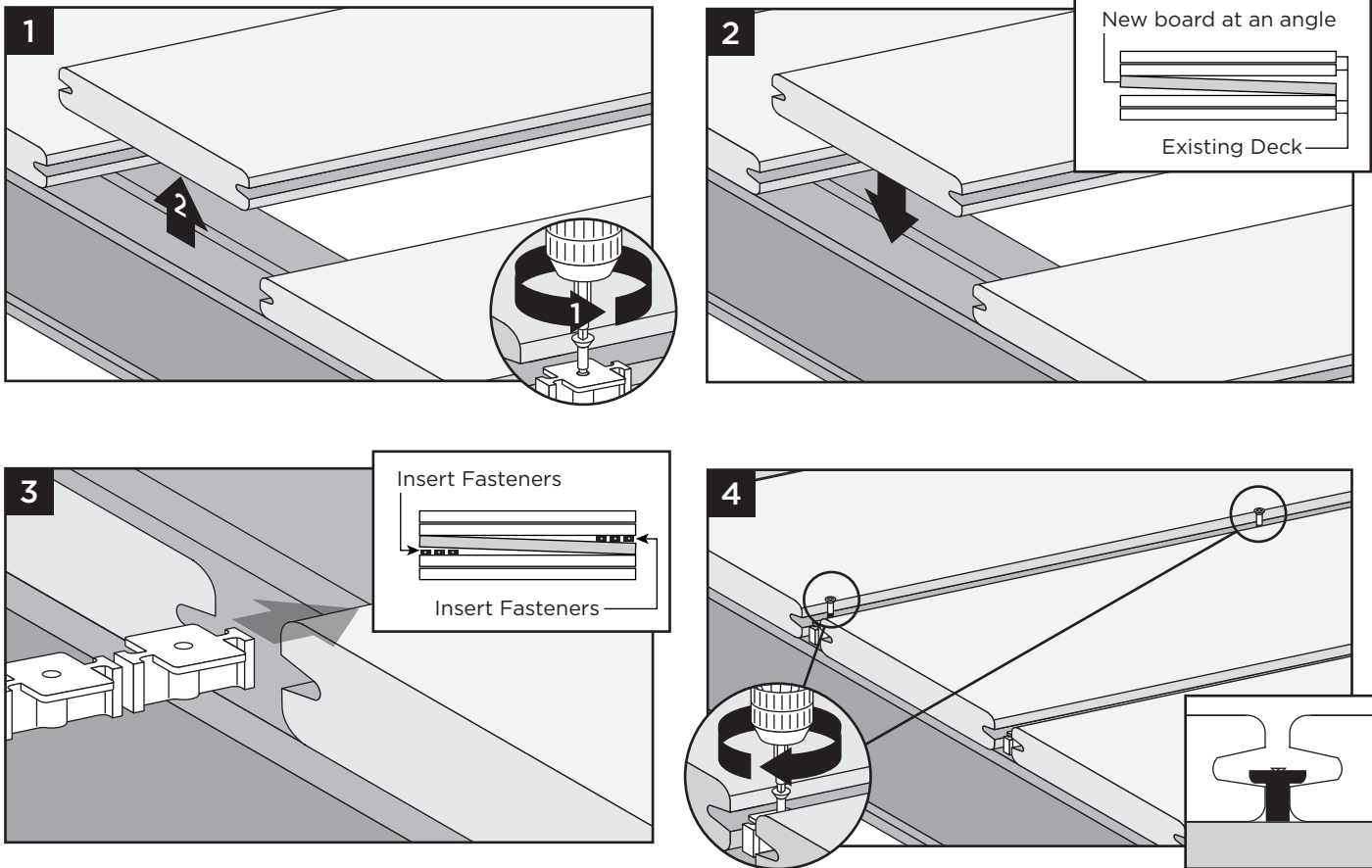
### Optional Fascia Installation



**NOTE:** Fascia wider than 60mm will require more detailed fastener requirements. Fascia boards are not allowed to carry loads from decking. Contact a Trex representative for more detail.



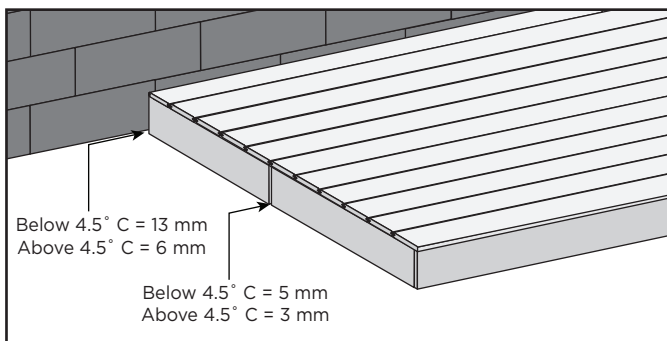
## REPLACING TREX BOARDS INSTALLED WITH TREX HIDEAWAY UNIVERSAL FASTENERS



## INSTALLING TREX FASCIA AND GAPPING

Trex Fascia, utilized around the perimeter of a deck, must be gapped with the same requirements as Trex decking to allow for air flow and expansion/contraction of the fascia.

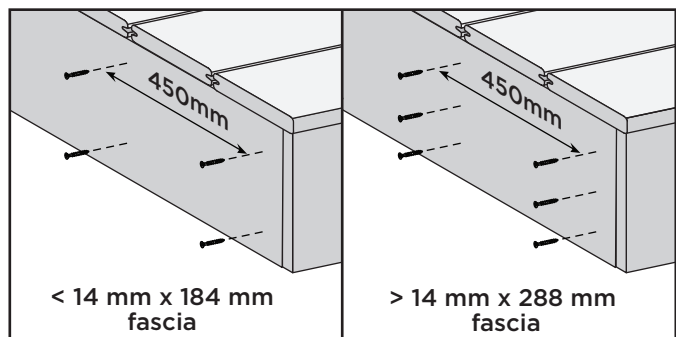
The fascia gapping requirements are as follows:



### When Using Approved Fascia Fasteners:

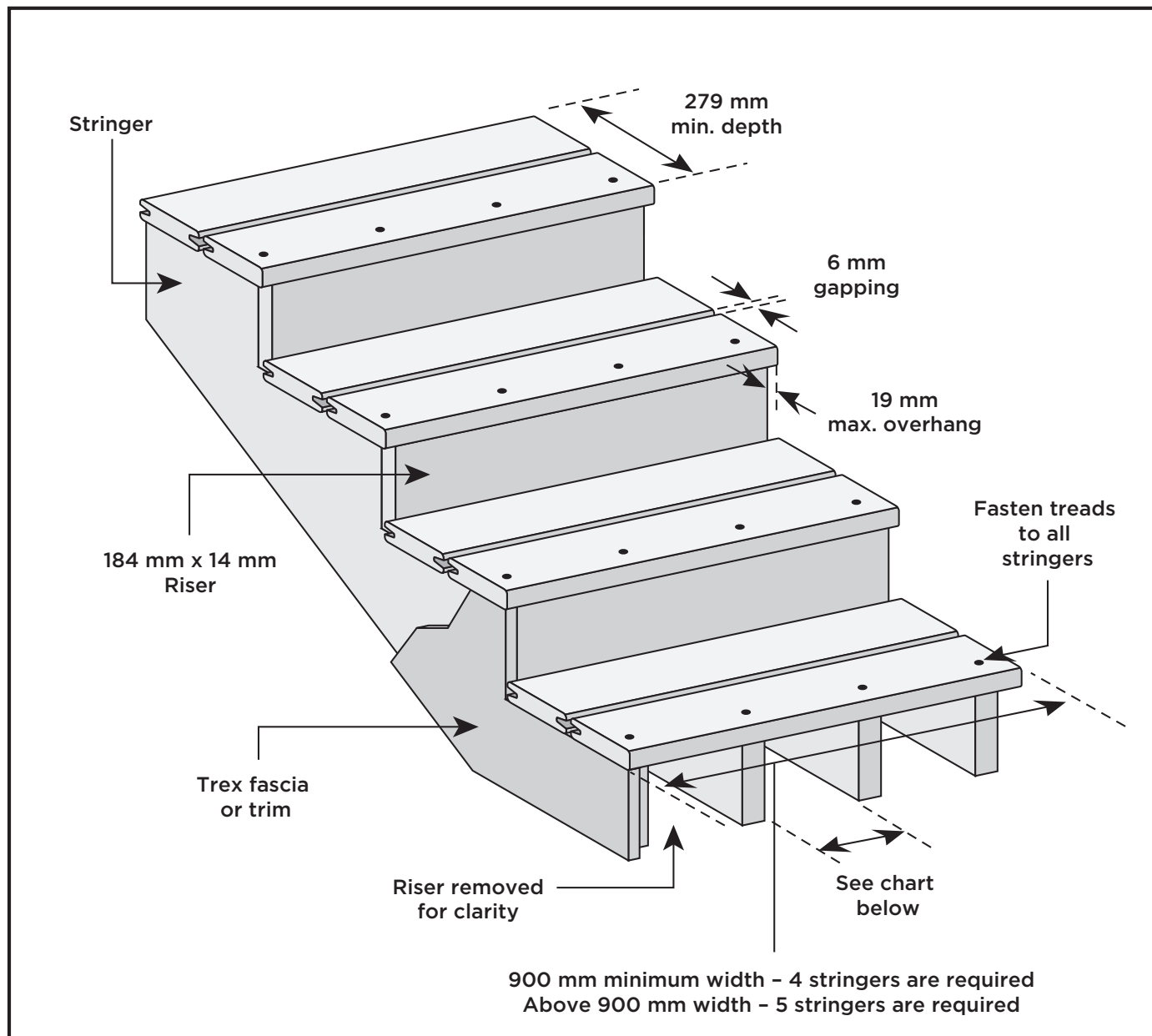
**NOTE:** The fasteners listed below can only be used with 14 mm x 184 mm or 14 mm x 288 mm fascia product, and cannot be used with decking product that is being used as fascia trim or stair risers.

Trex recommends the use of Starborn® Deckfast® Fascia System or SplitStop™ Fascia Screws.



## SPANNING REQUIREMENTS FOR TREX STAIRS

**NOTE:** Shown with wood framing.



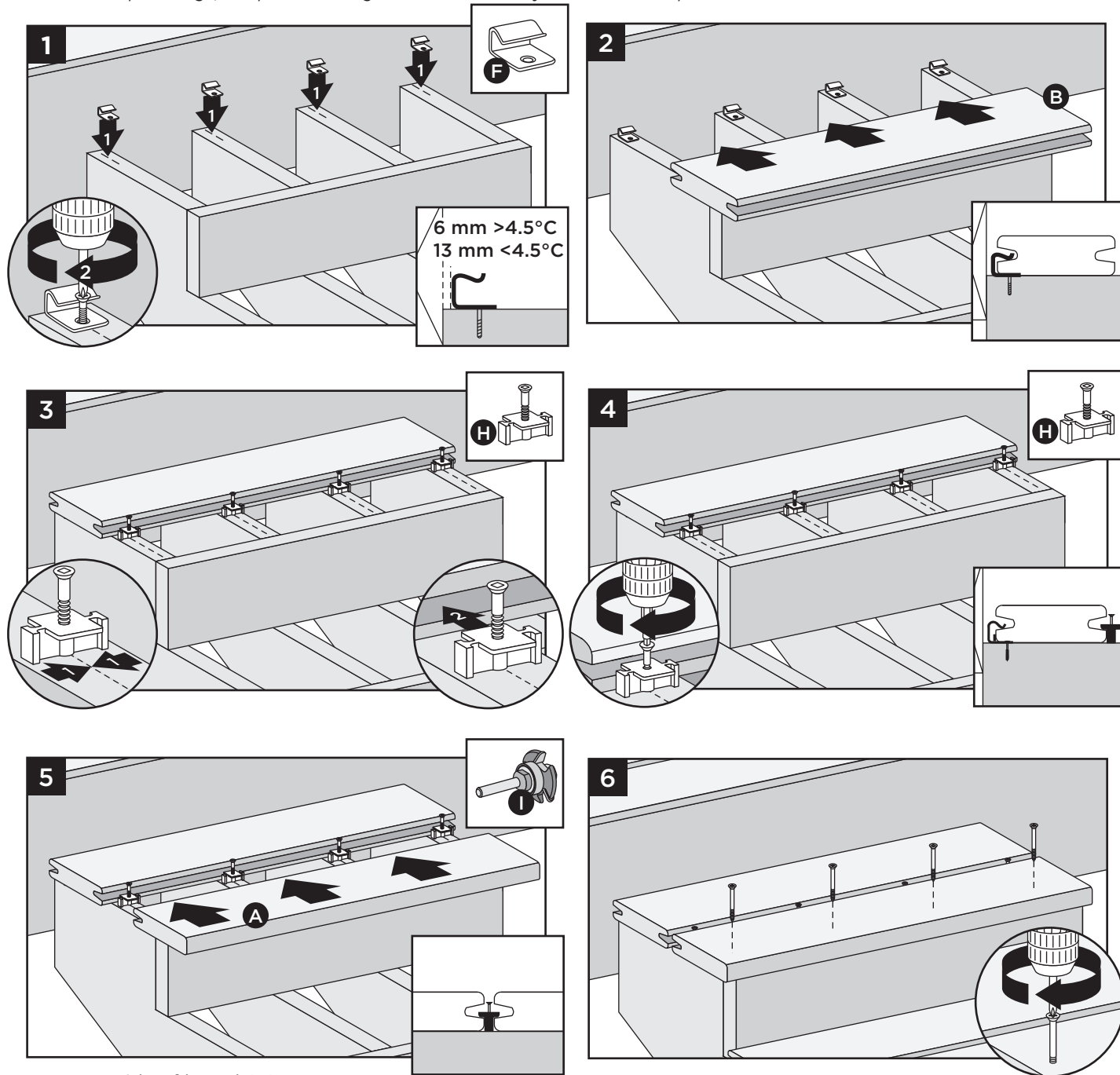
### MAXIMUM SPACING OF STAIR JOISTS (Centre-to-Centre)

For approved AU spans, refer to <https://au.trex.com/trex-owners/downloads/> and view detailed span tables provided by SOTO Engineering located under Evaluation Service Reports.

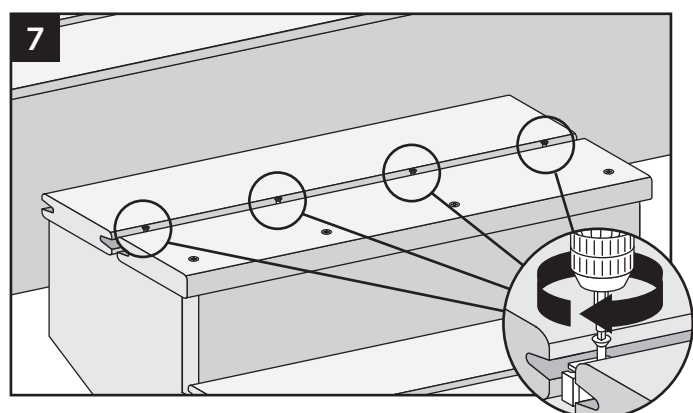
**NOTE:** Construction methods are always improving. Please refer to [www.au.trex.com](http://www.au.trex.com) for the most up-to-date installation requirements.

# INSTALLING TREX STAIR TREADS INSTALLED WITH TREX HIDEAWAY HIDDEN FASTENING SYSTEMS

**NOTE:** Use square-edge, composite decking boards and manually rout these on required sides to allow for use with hidden fasteners.



Route one side of board (A).







BACK  
decking: Transcend in Tiki Torch & Spiced Rum

FRONT  
decking: Transcend in Island Mist

DECKING | RAILING | FRAMING | LIGHTING | FASCIA | KITCHENS | FURNITURE | PERGOLA | DRAINAGE



The World's #1 Decking Brand

FIND US ON



Visit **trex.com** or call **1-800-BUY-TREX**

© 2020 Trex Company, Inc. All rights reserved. Trex®, the Trex logo, Trex Transcend®, Trex Enhance®, Trex Signature®, Trex Hideaway®, Trex Elevations®, Trex® Outdoor Lighting™, Trex Blade™, Trex® Outdoor Kitchens™, Trex® Spiral Stairs™, Trex® RainEscapes®, Trex® Pergola™, TrexPro®, Trex® CustomCurve®, Trex® LatticeWorks™ and Trex® Cornhole™ are either federally registered trademarks, trademarks or trade dress of Trex Company, Inc., Winchester, Virginia or its licensees.

