



2019 INSTALLATION GUIDE



CHANGES FOR 2019 INSTALL GUIDE:

- » **Page 7** Updated storage recommendations to include new Trex® Enhance® profile
- » **Page 22** Added Trex Photocell Motion Controller Instructions
- » **Page 27** Added new decking profiles (Enhance Naturals)
- » **Page 28** Added new decking profiles and additional fascia fasteners to Decking and Fascia Recommended Fasteners list
- » **Page 29** Updated Fascia Install Recommendations
- » **Page 35** Updated routing square edge profile recommendations for decking profiles
- » **Page 37** Updating hidden fastener instructions using square edge board as last deck board
- » **Page 42-43** Updated stair spanning and installation instructions for new Trex® Enhance® profile
- » **Page 62** Updated ADA SKU numbers
- » **Pages 64, 67, 72, 84, 98, 118, 119, 144, 147** Updated Cocktail rail instructions for all railing configurations - new Trex® Enhance® profile cannot be used for Cocktail rail applications and removed Contour references
- » **Page 77** Updated Transcend Stair Railing Instructions
- » **Page 133** Revised Rod Rail instructions for method of measurement and cutting of top and bottom rails
- » **Page 154** Updated ADA Railing Profiles and Instructions
- » **Page 160** Updated Limited Warranty page

NEED HELP?

Trex provides a variety of valuable resources to answer your questions or concerns. For additional assistance, check out:

» **Trex.com**

Here you will find a wealth of useful information on Trex's extensive products including: installation, care and cleaning instructions and videos, technical help, and FAQs. You'll also find inspiring photos of deck projects, steps to help you plan and start your project, and tips for selecting the right deck builder. At **trex.com**, you can request information, register your warranty, and reach out to customer service representatives who can answer even more questions.

- » Call **1-800-BUY-TREX (1-800-289-8739)** and speak to a Customer Loyalty Advocate who can answer your questions.

Refer to **www.trex.com** for up-to-date installation and technical documents that may not be found in this printed guide.



This symbol indicates text continues to next page.

NOTE: Construction methods are always improving. Please refer to www.trex.com for the most up-to-date installation requirements.

TREX INSTALLATION GUIDE

CONTENTS

SECTION ONE: General Information

Safety	5
Tools	5
Care and Cleaning	6

SECTION TWO: Planning Ahead

Trex Decking	10
Railing (Including ADA Handrail)	10
Trex Lighting	10
Trex® RainEscape® Drainage System	10
Installing Hot Tubs, Planters, and Seating	10
Installing Fireplaces and/or Fire Pits	10
Installing a Pergola	11
Installing Trex® Spiral Stairs™	11
Installing Trex® Outdoor Kitchens™	11

SECTION THREE: Lighting

How to Install Trex® Outdoor Lighting™

Outdoor Lighting SKUs	13
Parts List/Tools Needed	14
Lighting and Wiring Overview	14
Helpful Tips	14
General Information	15
Planning	15
Installing Wiring	15
Making Connections	15
Timer Operation Instructions	16
Installing Post Cap Lights	16
Installing Deck Rail Lights	16
Installing Riser Lights	17
Installing Recessed Deck Lights	17
How to Program Dimmer Remote	18

How to Install Trex® Signature™ Post Cap Light

Parts List/Tools Needed	18
Helpful Tips	19
Installing Post Cap Lights	19

How to Install Trex® Wedge Deck Rail Light

Parts List/Tools Needed	20
Helpful Tips	20

How to Install Trex® Photocell Motion Controller

Parts List/Tools Needed	22
Overview	22
Motion Control Sensor Location	22
Making a Post Pocket	23
One Sensor Install	23
Two Sensor Install	23
Multiple Zone Install	24
Adjustments	24
Other Buttons/Functions/Zones	25

SECTION FOUR: Decking

Decking, Porch Flooring & Fascia SKUs	27
Decking and Fascia Recommended Fasteners	28
Trex® Fascia Installation Recommendations	29
Framing and Fastening Tips	30
Rooftop and Sleeper Deck Systems	31
Metal Framing Requirements and Gapping	32
Code Compliance	33
Gapping and Overhang	34

How to Install Decking

Important Notes Before Installing Trex Decking	35
Routing Square Edged Boards for Trex Hideaway®	
Hidden Fasteners	35
Abutted Board Attachment Requirements	35
Metal Framing	35
Installing Trex Transcend®, Enhance®, Select®	
Deck Boards	36
Installing Escapes Boards with Trex Hideaway	
Universal Hidden Fasteners	37
Installing Trex Transcend Porch Boards	39
Replacing Trex Boards	41
Spanning Requirements For Trex Stairs	42
Stairs	42
Installing Trex Stair Treads	
Installed with Hidden Fasteners	43
Location and Installation of Surface Mount	
Post - Decking	44
Parts List/Tools and Materials Needed	44
How to Install Post Mounts on Pressure-Treated	
Wood Framing	44
Corner Post Installation	44
Line Post Installation	45
How to Install Guide Blocks	45
How to Install Railing System of Choice	46
Location and Installation of Post Mounts - Concrete ..	47
Parts List/Tools Needed	47
How to Install Guide Blocks	47
How to Install Railing System of Choice	48
How to Install Joist Mount Posts	
Parts List/Tools Needed	49
Inside Mount	
Front Rim Plate - Between Joists	50
Front Rim Plate - Next to Joist	50
Side Joist	51
Corner	52
Composite Post Sleeve Applications	
Installation of Guide Blocks and Railing	53
Fascia Mount	
Front Rim Plate - Next to Joist	54
Side Joist - With Blocking	55
Outside Frame Corner	56

SECTION FIVE: Railing

Post Sleeves, Caps and Skirts SKUs.....	58
Trex® Signature™ Aluminum Railing SKUs	59
Trex Transcend Railing SKUs	60
Trex Select Railing SKUs.....	61
Aluminum Gates SKUs.....	62
Aluminum ADA Compliant Handrail SKUs	62
Trex Transcend® Railing	
Parts List/Determining Balusters Needed	63
Trex Transcend Railing Configurations	64
How to Install Standard Railing	65
How to Install Cocktail Railing	67
How to Install Traditional Railing	68
How to Install Round or Square Aluminum Balusters	69
How to Install Standard Glass Panel Railing	70
How to Install Cocktail Style Glass Panel Railing	72
How to Install Traditional Style Glass Panel Railing	73
How to Install On-An-Angle Railing.....	75
How to Install Crown and Universal Bird's Mouth Railing.....	75
How to Install Crown and Universal Stair Railing	77
Trex® Signature™ Railing	
Parts List/Determining Balusters Needed	81
Installing Trex® Signature™ Posts and/or Trex® Signature™ Crossover Posts on Wood or Concrete	82
Installing Pressure-Treated Post, Post Sleeves, and Skirts to Use with Trex® Signature™ Railing...82	
Installing Trex® Signature™ Posts on Concrete	83
Railing Configurations.....	84
Bracket Hardware - Horizontal Applications	85
How to Install Horizontal Railing	86
How to Install Horizontal Railing Post to Post	87
How to Install Horizontal Railing Post to Crossover Post.....	90
How to Install Horizontal Railing Crossover Post to Crossover Post	94
How to Install Cocktail Railing	98
How to Install Traditional Railing	99
How to Install Horizontal Swivel Brackets	101
How to Install Horizontal Swivel Railing	102
How to Install Foot Blocks - Horizontal Railing	104
Bracket Hardware - Stair Applications	105
How to Install Stair Posts and Stair Railing	106
Attaching Fixed Stair Brackets and Rails to Trex® Signature™ Posts and Pressure-Treated Posts and Post Sleeves.....	107
Attaching Stair Swivel/Compound Swivel Brackets And Rails To Trex® Signature™ Posts And Pressure-Treated Post And Post Sleeves.....	111
Attaching Crossover Swivel Bracket On Trex® Signature™ Post	114

Attaching Stair Rails In Crossover Post Applications.....	116
How To Install Trex® Signature™ Cocktail Stair Railing	118
How To Install Trex® Signature™ Traditional Stair Railing	120
How to Install Aluminum Gate	122
Trex® Signature™ Panels	
Parts List/Tools Needed.....	124
Bracket Hardware - Horizontal Applications	125
How to Install Panels	126
How to Install Foot Blocks.....	130
Trex® Signature™ Horizontal Rod Railing	
Parts List/Tools Needed.....	131
How to Install Horizontal Rod Railing Brackets.....	132
How to Install Horizontal Rod Railing	132
Installing Standard Stair Posts, or Pressure-Treated Posts, Post Sleeves and Skirts.....	137
Bracket Hardware - Stair Applications.....	137
How to Install Stair Posts and Horizontal Rod Railing Stairs	137
How to Install Horizontal Rod Railing Stairs.....	137
Trex Select® Railing	
Parts List/Determining Balusters Needed	143
Select Railing Configurations	144
How to Install Trex Select Railing	144
How to Install Cocktail Railing	147
How to Install Traditional Railing	148
How to Install On-An-Angle Railing.....	149
How to Install Trex Select Stair Railing	150
Trex Aluminum ADA Compliant Handrail	
ADA Handrail Guidelines	153
Ramp Application	153
ADA Railing Profiles.....	154
Hardware.....	154
How to Install Trex Aluminum ADA Compliant 90° Wall Return.....	155
Wall Mount.....	155
Inline Bracket.....	155
Rail-to-Rail Connections/Internal Connector.....	155
Elbows (90°, 36°, 34°, 31°, 5°)	156
Handrail Return 180°	156
Corner Mount	156
SECTION SIX: Warranties	
Trex Transcend, Trex Enhance, Trex Select, and Trex® Universal Fascia Limited Fade & Stain Warranty.....	158
Trex® Limited Warranty	160
Trex® Signature™/Reveal® Railing Limited Warranty	161
Color Palette.....	163

SAFETY

When working on any construction project, you should wear protective clothing and safety equipment. Wear safety glasses, gloves, a dust mask and long sleeves, particularly when cutting in confined spaces.

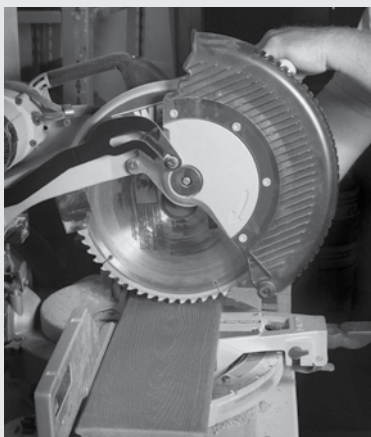
Trex decking and railing are heavier and more flexible than wood. **DO NOT** try to lift the same quantity of Trex boards as you would traditional lumber. Go to www.trex.com for Safety Data Sheets (SDS).

TOOLS

SAWS

Miter Saw:

When using a miter saw we recommend using the Trex Blade™ or a carbide-tipped blade with 60 teeth or more. The Trex Blade comes in three different sizes and is ideal for cutting all Trex decking and railing products (not recommended for Trex Elevations®).



Jigsaw:

For detailed and/or small cuts (Example: cutting deck board to fit around a post), a jigsaw with a carbide-tipped blade can be used.



DRILLS

Install Trex recommended fasteners with standard power drills, impact drivers (use care if using impact drivers), or right angle drills.



SPECIFIC DECK BOARD ATTACHMENT TOOLS

Screw Guns:



Some Trex recommended deck fasteners are compatible with screw guns. Refer to the recommended fasteners page for more information.

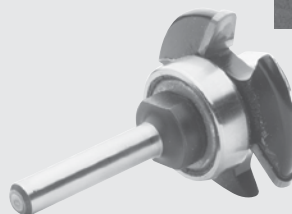
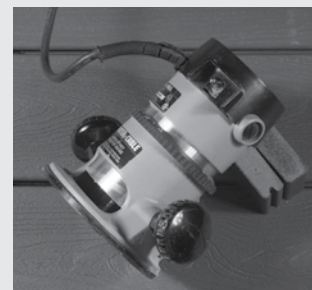
TigerClaw® Pneumatic Gun:

If choosing to use the Trex Hideaway Hidden Fastener Connector Clips (these are the metal clips) for Transcend or Enhance Decking or the TigerClaw TC-G Hidden Fasteners with Trex Select Decking, the TigerClaw pneumatic gun is a terrific option that allows for quicker install time.



Trex Router Bit:

Trex decking routs to give extremely crisp edges when using the Trex Router Bit with standard router, and can be use with all Trex Hideaway Hidden Fasteners.



*Trex Blade™ is manufactured and sold by Freud Tools, Inc. under a Trademark License Agreement with Trex Company, Inc.

*Tiger Claw® is a registered trademark of Tiger Claw, Inc.

TREX TRANSCEND[®], TREX ENHANCE[®], AND TREX SELECT[®] CARE AND CLEANING GUIDE

All exterior building materials require cleaning. Generally, soap and water is all that is required to clean Transcend, Enhance, and Select products. For additional information, see below.

PROBLEM	SOLUTION
Dirt and Debris	The affected area should be sprayed off with a hose to remove surface debris. Use warm soapy water and a soft bristle brush to remove dirt and debris from the embossing pattern.
Hard Water Staining	Hard water is water with a high amount of mineral deposits like lime, silica and calcium. When the water dries, deposits are left behind, leaving unsightly spots on surfaces. This is not a defect of Trex products but an issue with the water itself. Generally, these deposits can be cleaned with white vinegar on decking surfaces or with the use of Magic Eraser [®] on railing surfaces. Rinsing is required so care should be taken to not use hard water for this purpose. If hard water must be used, dry with a cloth or use a blower to dry surfaces. In some cases a deck brightener product may also be used to help clean hard water stains.
Chalk Lines	Most colored chalks are permanent and may discolor the surface. Use only Irwin Strait-Line ^{®*} Dust-Off Marking Chalk (purple), available at Irwin.com .
Tannins Due to Debris	Remove all debris from the deck using a hose or broom. Once the deck surface is dry, apply a deck "brightener"*** to the deck as directed by the manufacturer. Deck Brighteners contain oxalic acid, which will also remove tannins.
Ice and Snow	A plastic shovel may be used to remove snow from the deck. Use calcium chloride or rock salt to melt the snow and ice from the deck surface.
Oil, Grease, and Food	All food spills should be removed as soon as possible. The surface must be cleaned within seven days to maintain the stain warranty. To remove, spray off with a hose and use warm, soapy water and a soft bristle brush to remove spills from the embossing pattern.
Mold and Mildew	If debris such as pollen and dirt is allowed to remain on the deck surface, mold can feed on the biofilm. Using a hose and warm, soapy water with a soft bristle brush is recommended to remove the food source and mold.
Using a Pressure Washer (Concrete, Stucco, or Ground-in Construction Dirt)	A pressure washer with no greater than 3100 psi*** that has a fan attachment/adjustment and soap dispenser may be used to remove dirt, concrete dust, or other types of construction dirt. Spray deck with soap, then follow by gently scrubbing each deck board with a soft bristle brush. Spray/rinse each individual deck board using a fan tip no closer than 8-in (203 mm) from the decking surface. RINSE THOROUGHLY. If dirty water from cleaning is left to dry, a film will remain on the decking surface.
Maintaining Transcend and Select Railing	Never use acetone or other solvents on Trex Transcend or Select railing to maintain the beauty of the surface. For color transfer issues (from attachment of baluster spacer), use Mr. Clean [®] Magic Eraser [®] Original**** or Plexus [®] Plastic Cleaner***** to help remove this. For small surface scratches, marks, or scuffs, use Dupli-Color Scratch Seal [™] Clear Sealer Pen.*****



TREX TRANSCEND[®], TREX ENHANCE[®], AND TREX SELECT[®] CARE AND CLEANING GUIDE

PROBLEM	SOLUTION
<p>Trex and Static Electricity</p>	<p>While this is not common, static electricity can occur on walking surfaces in dry climates or in areas where dry winds and dust-borne particles lay on the decking surfaces. Static electricity can build up on occupants walking across any composite decking surface, including Trex, then produce a small static shock if they touch a grounded metal surface such as railing, door, etc.</p> <p>This condition can be decreased greatly with the use of a product call ACL Staticide[®]. Two products tested were General Purpose Staticide[®] and Heavy Duty Staticide[®]. Both are effective in greatly reducing static electricity on Trex decking surfaces. Apply full strength using a mop on a dry decking surface, and allow to dry; no rinsing or diluting needed. Products are non-toxic, non-flammable, non-staining (will not change the color of decking surface), completely biodegradable and safe to use. Product is water-based and may require a second application after rain or other weather conditions. Over a period of time, the effect of static will dissipate naturally on the decking surface.</p> <p>See link for more information on product: http://www.aclstaticide.com/antistatic_coatings.html</p>
<p>Job Site Storage</p>	<p>Store decking on a flat level surface and ALWAYS use proper supports (dunnage). DO NOT store directly on the ground. When stacking decking bundles, supports (dunnage) should start approximately 8-in (203 mm) from each end and be spaced approximately 2-ft (0.61m) on center. In addition, supports (dunnage) should line up vertically/perpendicular to the decking product. Adjust support blocks (dunnage) accordingly if bundles are loose. For Select decking, Enhance (scalloped profile only) decking, and 1x12 and 1x8 products, the maximum stack height is 12 bundles. For all other decking products maximum stack height is 14 bundles (IMPORTANT TO NOTE THAT PROPER DUNNAGE SPACING MUST BE IN PLACE FOR THESE HEIGHTS). When stacking multiple bundles, ensure that dunnage lines up vertically down through each stack. ALWAYS cover decking products on site until ready to be installed.</p>

*Strait-Line[®] is a registered trademark of Irwin Industrial Tool Company.

**Use of products containing bleach or acid can lighten the surface of Trex. Use in an inconspicuous area to determine whether you like the effect. Neither product will affect the structural integrity of Trex.

***Use of a pressure washer greater than 3100 psi could damage the boards and void the warranty.

****Mr. Clean[®] and Magic Eraser[®] are registered trademarks of The Proctor and Gamble Company.

*****Plexus Plastic Cleaner is a registered trademark of BTI Chemical Company Inc.

*****Scratch Seal[™] Clear Sealer Pen is a registered trademark of Dupli-Color Products Company.

NOTES:

- » Refer to www.trex.com to view a general care and cleaning video for Transcend, Enhance, and Select decking.
- » Refer to www.trex.com for a care and cleaning guide for Trex Early-Generation Composite and PVC Decking.



TREX® SIGNATURE™ RAILING CARE AND CLEANING GUIDE

Maintaining the appearance of your Trex® Signature™ railing is important. The occasional wash is recommended as over time your Trex® Signature™ railing may show signs of weathering as a result of exposure to the elements. The frequency of cleaning will depend on the environment and exposure to various types of elements.

For installations where the atmosphere is influenced by bodies of salt water or other contaminant conditions, cleaning is required every 6 to 9 months. Failure to adhere to the required cleaning guidelines will void the Trex Limited Warranty with respect to any condition resulting from such failure. For purposes of any warranty claim, you should retain documentation of the cleaning date, cleaning method used, brand and amount of chemical used, and invoice from cleaning company (or a receipt for chemicals used).

Regular cleaning may minimize the effects of weathering and remove dirt, grime and other build-up. The best method of maintaining the appearance of your Trex® Signature™ railing is to occasionally wash it using a solution of warm water and a non-abrasive, pH neutral detergent solution. The railing surface should be thoroughly rinsed after cleaning to remove all residues. Use a soft white cloth, sponge or a soft bristle brush.

DO NOT clean Trex® Signature™ railing with solvents such as thinners or solutions containing chlorinated hydrocarbons, esters or ketones.

The following cleaners are recommended for cleaning Trex® Signature™ railing:

- » Formula 409® Cleaner Degreaser/Disinfectant*
- » Spray Nine® Cleaner/Disinfectant**
- » Simple Green® All Purpose Cleaner***
- » Fantastik® All Purpose Cleaner****
- » Windex® Cleaner*****

* Formula 409® Cleaner Degreaser/Disinfectant is a trademark of Clorox Company.

** Spray Nine® All Purpose Cleaner/Disinfectant is a trademark of Illinois Tool Works Inc.

*** Simple Green® All Purpose Cleaner is a trademark of Sunshine Makers Inc.

**** Fantastik® All Purpose Cleaner is a trademark of SC Johnson & Son Inc.

***** Windex® is a trademark of SC Johnson & Son Inc.