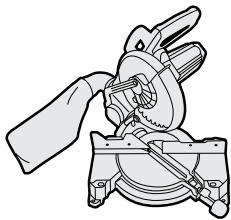




2019 AUSTRALIAN INTERNATIONAL DECKING INSTALLATION GUIDE



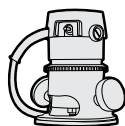
TOOLS NEEDED



Mitre saw blade
(254 mm—305 mm.
40 teeth or more)



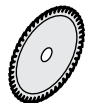
Trex groove
router bit



Trex groove cutter



Standard power drill

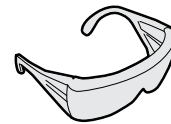


Carbide-tipped
blades

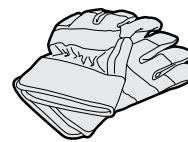
SAFETY



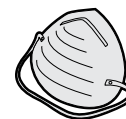
Long sleeves



Safety glasses



Gloves



Dust mask

- Please be sure to follow the temperature suggestions at installation to allow for the expansion and contraction of Trex WPC boards.
- For Trex Railing, Hot Tub, Fire Pit or Lighting installation instructions, and for Care and Cleaning and Physical and Mechanical Properties, visit www.trex.com and scroll to the bottom to select your country.

✓ Country
United States
Australia
Austria
Bahrain
Brazil
Canada
Chile
Colombia
Costa Rica
Cyprus
Czech Republic
El Salvador
Fiji
France
Germany
India
Ireland
Israel
Kuwait

COUNTRY

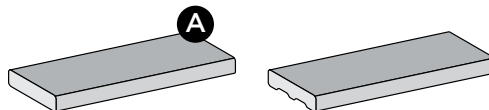
MORE

[Contact Us](#)
[Connect](#)
[Live chat: offline](#)
[Site Map](#)
[Privacy Policy](#)
[Terms Of Use](#)
[FAQs](#)

TREX DECKING, FASCIA, AND FASTENING SYSTEMS

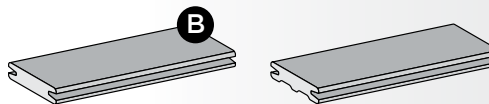
25 mm Square-Edge Board

Actual Dimensions:
140 mm x 25 mm x 5.48 m



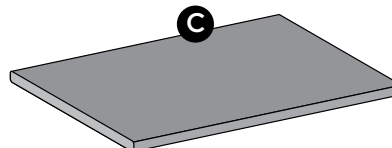
25 mm Grooved-Edge Board

Actual Dimensions:
140 mm x 25 mm x 5.48 m



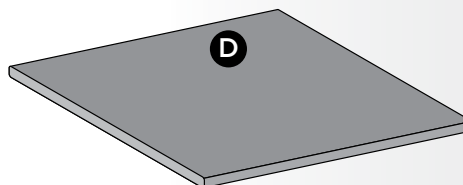
14 x 184 mm Fascia

Actual Dimensions:
184 mm x 14 mm x 3.65m



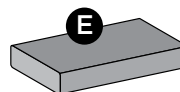
14 x 288 mm Fascia

Actual Dimensions:
288 mm x 14 mm x 3.65 m



33 mm Square-Edge Board

Actual Dimensions:
140 mm x 33 mm x 4.88 m



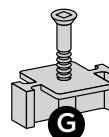
Trex Universal Start Clip/Elevations Start Clip

Black-coated Stainless Steel (steel grade 302SS)



Trex Elevations Universal Hidden Fastener

Glass-filled Nylon (steel grade 410SS)

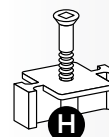


Trex Universal Hidden Fastener or

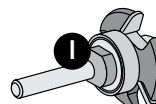
Glass-filled Nylon (steel grade 302SS)

Trex Universal Hidden Fastener (for use with Aluminum Substructure)

Glass-filled Nylon (steel grade 300 series)

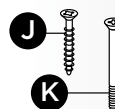


Router Bit



Fascia and Deck Screws (Not supplied by Trex)

Supplied by installer



SPANNING REQUIREMENTS

For approved AU spans, refer to <https://au.trex.com/trex-owners/downloads/> and view detailed span tables provided by SOTO Engineering located under Evaluation Service Reports.

RECOMMENDED FASTENERS

COMPATIBLE FASTENER MATERIALS FOR USE WITH TREX			
Substrate Material	Carbon Steel w/ 1000 hr. Corrosion- Resistant Coating	Stainless Steel: 410 Series or 1.4003/ 1.4006	Stainless Steel: 300 Series or 1.4301/1.4401/1.4567
Exterior Grade Natural or Treated Wood	Yes***	Yes	Yes**
Plastic or Fiberglass Composites	Yes	Yes	Yes
Aluminum	No	No	Yes
Steel	No	Yes*	Yes#

*Trex Elevations Universal Hidden Fastener are approved

**Trex Universal Hidden Fasteners are approved

*Trex Universal Hidden Fasteners for Aluminum Framing are approved

***See Trex recommended fasteners for listing of approved decking screws

This guide is for recommended use of fasteners for use with Trex decking. Not all sub-structure materials fall under these categories. In the case of any unique substrate composition of materials, or proprietary composites, consult the substrate manufacturer for recommendations of applicable fasteners.

		Transcend®	Contour
RECOMMENDED FASTENERS	DECKING-HIDDEN FASTENERS		
	Trex Hideaway® Universal Hidden Fastener/Trex Elevations Universal Hidden Fastener	X	X
	FastenMaster® TrapEase 3 Ultimate Composite Deck Screw	X	X
	Cortex® Concealed Fasteners	X	
	KlevaKlip™ Snap-LOC Clip	X	X
RECOMMENDED FASTENERS	FASCIA*		Transcend®
	Starborn® Deckfast® Fascia System - Epoxy Coated* and Headcote® Stainless		X
	SplitStop™ Fascia Screws (uses SplitStop™ Fascia Bit)		X

Fascia system screws listed above **can only be used with composite fascia profiles**, and cannot be used with standard thickness decking boards used as fascia. Use stainless steel screws near water applications.

If any condition occurs which is attributable to the use of non-recommended fasteners, such condition shall not be covered under Trex's Limited Warranty.

FastenMaster®, TrapEase® 3, and Cortex® are registered trademarks of OMG, Inc.

DeckFast® Fascia System screws are registered trademarks of Starborn Industries Inc.

SplitStop™ fascia screws are a registered trademark of Titan Metal Werks, Inc.

Trex recommends the use of two screws per joist.

All recommended screws are designed to be installed flush with decking surface, DO NOT countersink screws.

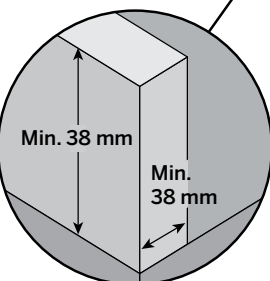
Use recommended stainless steel screws in any areas near bodies of saltwater.

BUSHFIRE SAFETY REGULATIONS

Trex Transcend decking is compliant with bushfire safety regulations for BAL-19 and BAL-29 zones. Refer to <https://au.trex.com/trex-owners/downloads/> and view Trex technical bulletin titled BAL Testing Results under Technical Information, for certain requirements in order to meet these regulations. Please also consult your local council or State building codes for your particular geographical requirements.

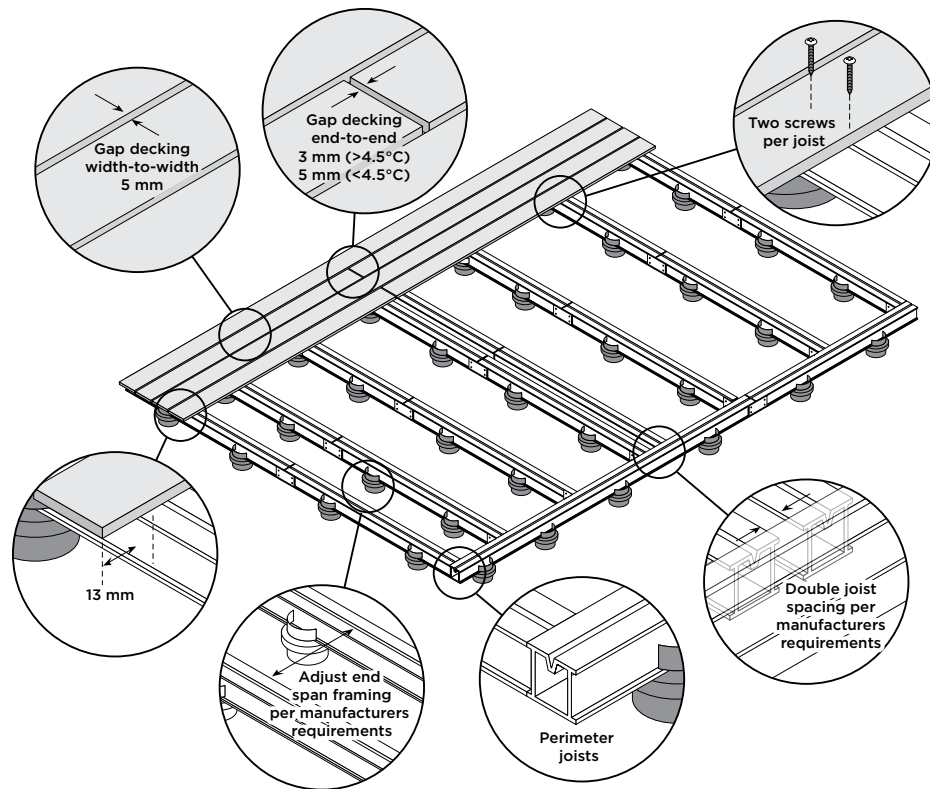
NOTE: Construction methods are always improving. Please refer to www.au.trex.com for the most up-to-date installation requirements.

FRAMING



Tile Pattern

METAL FRAMING REQUIREMENTS AND GAPPING



COMPATIBLE FASTENER MATERIALS FOR USE WITH TREX

Substrate Material	Carbon Steel w/ 1000 hr. Corrosion Resistant Coating	Stainless Steel: 410 Series or 1.4003/1.4006	Stainless Steel: 300 Series or 1.4301/1.4401/1.4567
Exterior Grade Natural or Treated Wood	Yes***	Yes	Yes**
Plastic or Fiberglass Composites	Yes	Yes	Yes
Aluminum	No	No	Yes
Steel	No	Yes*	Yes#

*Trex Elevations Universal Hidden Fastener are approved

**Trex Universal Hidden Fasteners are approved

Trex Universal Hidden Fasteners for Aluminum Framing are approved

***See Trex recommended fasteners for listing of approved decking screws

This guide is for recommended use of fasteners for use with Trex decking. Not all sub-structure materials fall under these categories. In the case of any unique substrate composition of materials, or proprietary composites, consult the substrate manufacturer for recommendations of applicable fasteners.

NOTES:

- » Gapping rules are required when installing Trex decking.
- » When using an aluminum framing system or other type of metal for sleeper systems, follow manufacturer's instructions for proper installation.
- » Depending on loading requirements and/or if installing Trex decking on an angle, framing spacing may need to be adjusted. **See page 4 for Trex requirements.**
- » Depending on type of structure being used, different types of fasteners must be used for attachment. Refer to the chart at right for compatible fasteners based on substrate material being used.
- » When using screws to attach decking to framing, use two screws per every joist.

TREX AND STATIC ELECTRICITY

While this is not common, static electricity can occur on walking surfaces in dry climates or in areas where dry winds and dust-borne particles lay on the decking surfaces. Static electricity can build up on occupants walking across any composite decking surface, including Trex, then produce a small static shock if they touch a grounded metal surface such as a railing, door, etc.

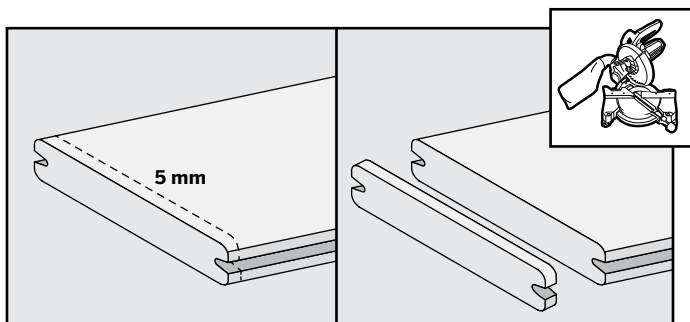
This condition can be decreased greatly with the use of a product call ACL Staticide®. Two products tested were General Purpose Staticide® and Heavy Duty Staticide®. Both are effective in greatly reducing static electricity on Trex decking surfaces. Apply full strength, using a mop on a dry decking surface, and allow to dry. No rinsing, no diluting needed. Products are non-toxic, non-flammable, non-staining (will not change the color of decking surface), completely biodegradable and safe to use. Product is water based and may require a second application after rain or other weather conditions. Over a period of time, the effect of static will dissipate naturally on the decking surface.

See link for more information on product: http://www.aclstaticide.com/antistatic_coatings.html.

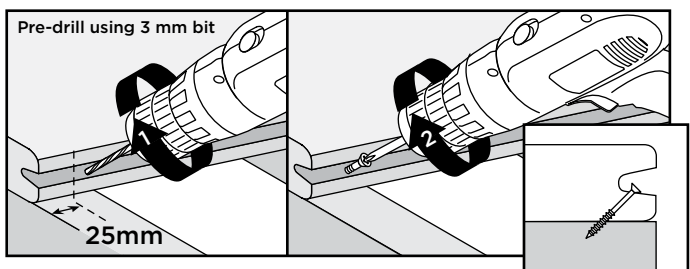
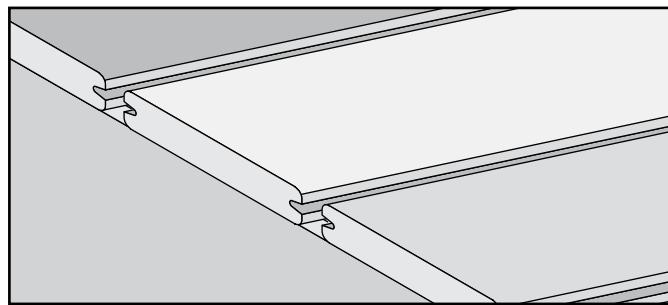
NOTE: Construction methods are always improving. Please refer to www.au.trex.com for the most up-to-date installation requirements.

INSTALLING TREX DECKBOARDS

IMPORTANT: You MUST clean cut boards on both ends (min. 5 mm).



To ensure an appealing mix of color tones, mix and match all boards prior to installation.

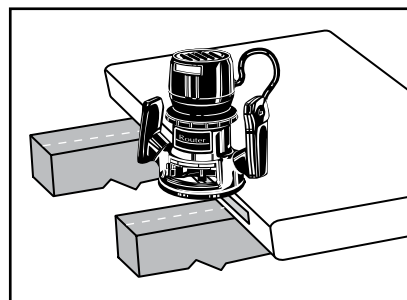


Routing Square Edge Boards for Trex Hideaway Hidden Fasteners

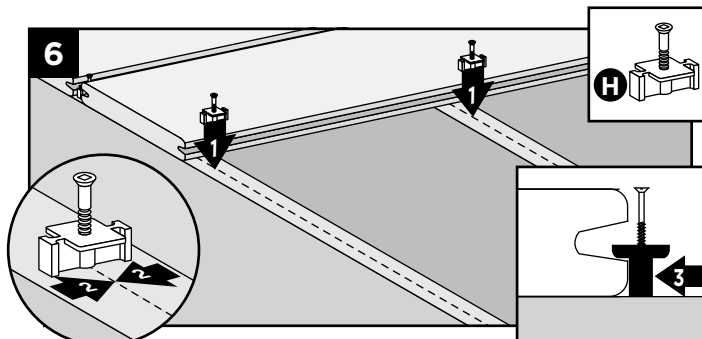
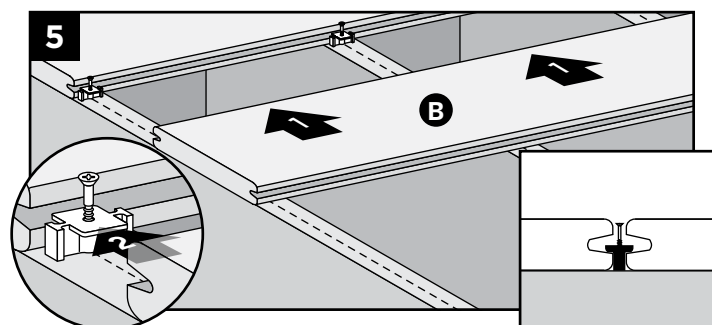
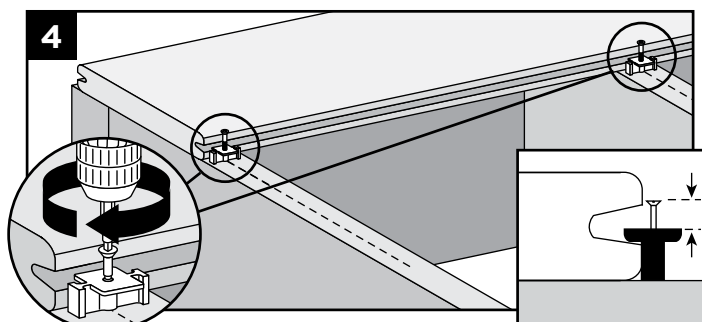
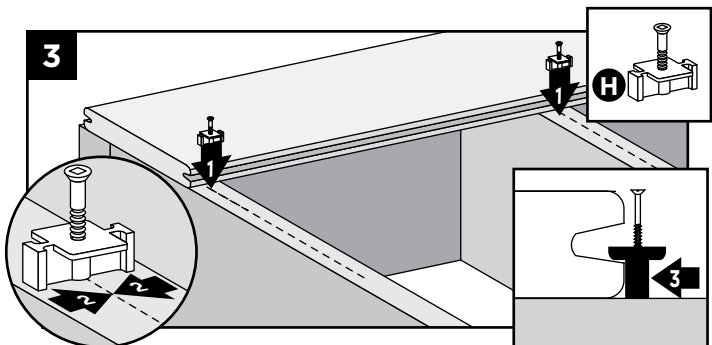
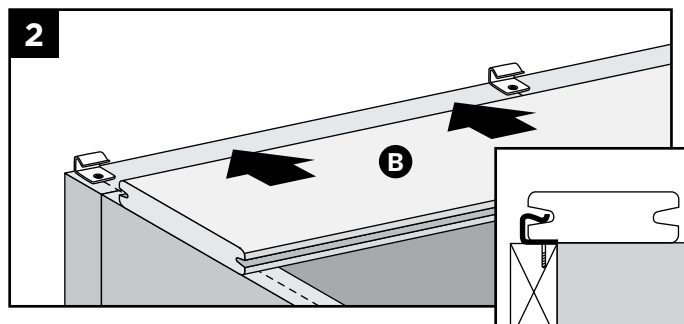
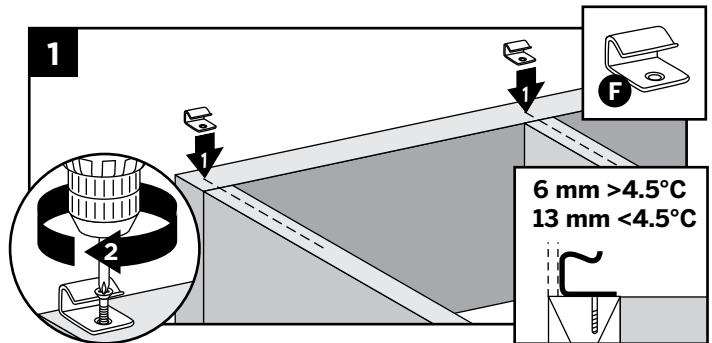
NOTE: All Trex square edge profiles can be routed.

Using a Trex router bit with standard router:

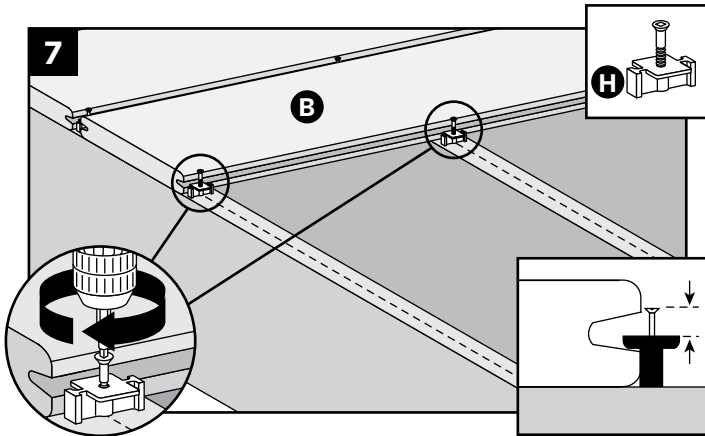
1. Rout from bottom side of board.
2. Rout the entire length of the board, or at every intersection where board is over support joists.



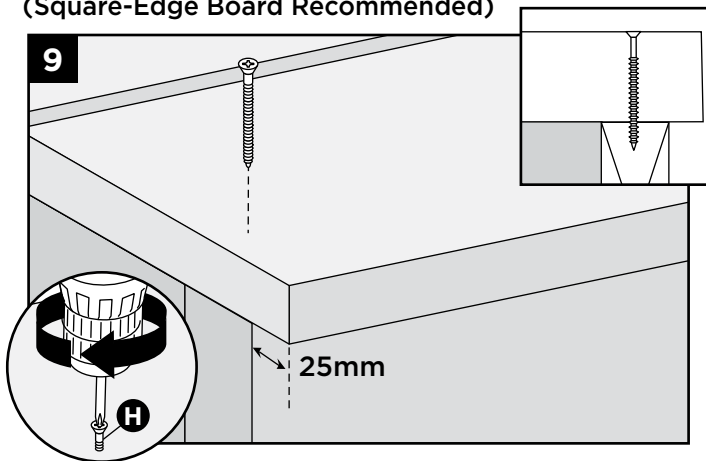
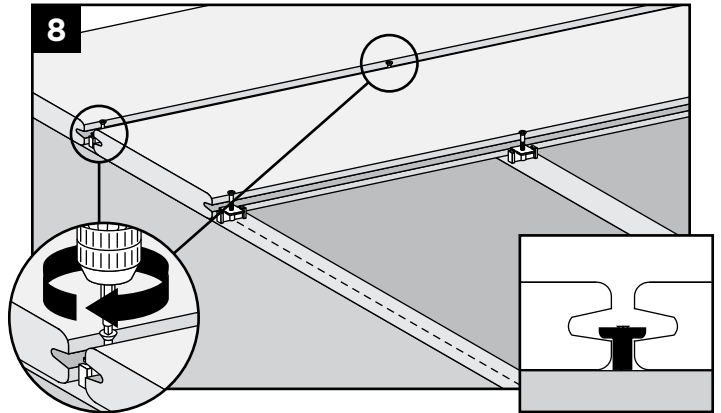
If installing in localities prone to large temperature shifts within a 24-hour period, and installing Trex Universal Hidden Fasteners, predrill and toenail a screw (use same screw used in hidden fasteners) at an angle in groove at both ends (25mm) from board end) and centre of each board.



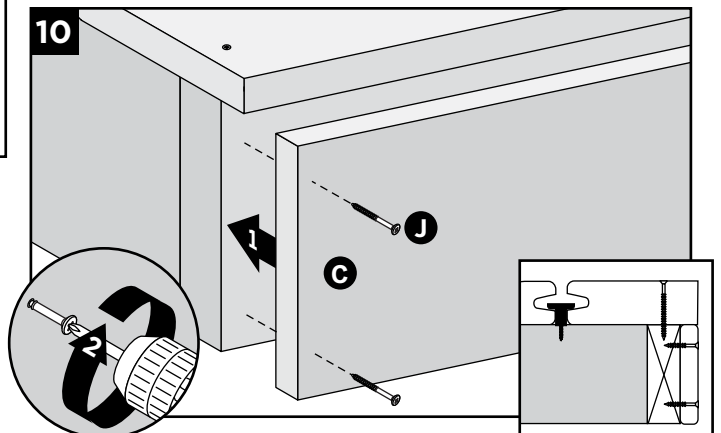
INSTALLING TREX DECKBOARDS/CONTINUED



**Installing Last Deck Board
(Square-Edge Board Recommended)**

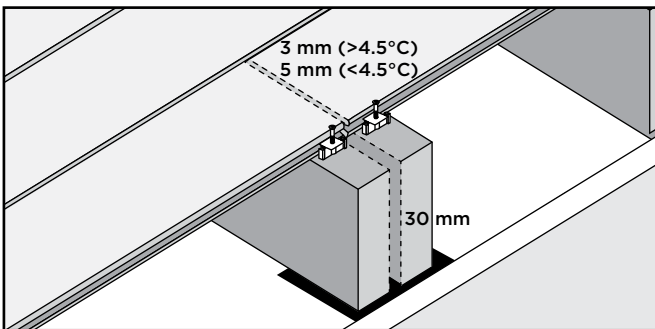


Route one side of square-edge board to use with hidden fasteners.



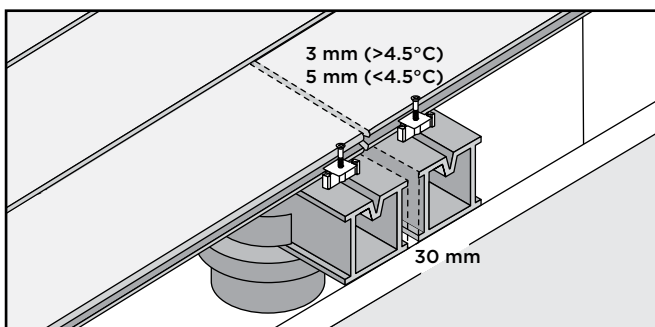
Fascia screws supplied by installer (14 mm x 184 mm fascia shown).

Wood Framing

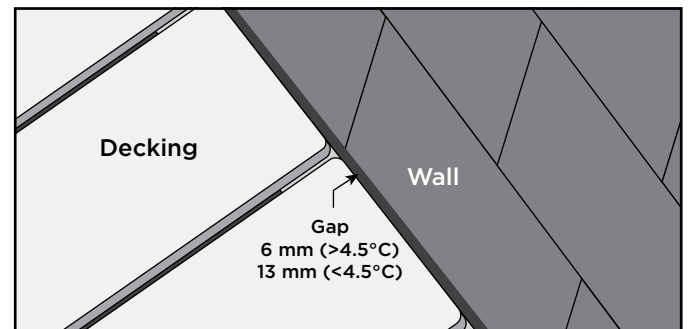


NOTE: A shorter section of joist (versus a full second joist) can also be attached to main joist in this area to serve the same function as above.

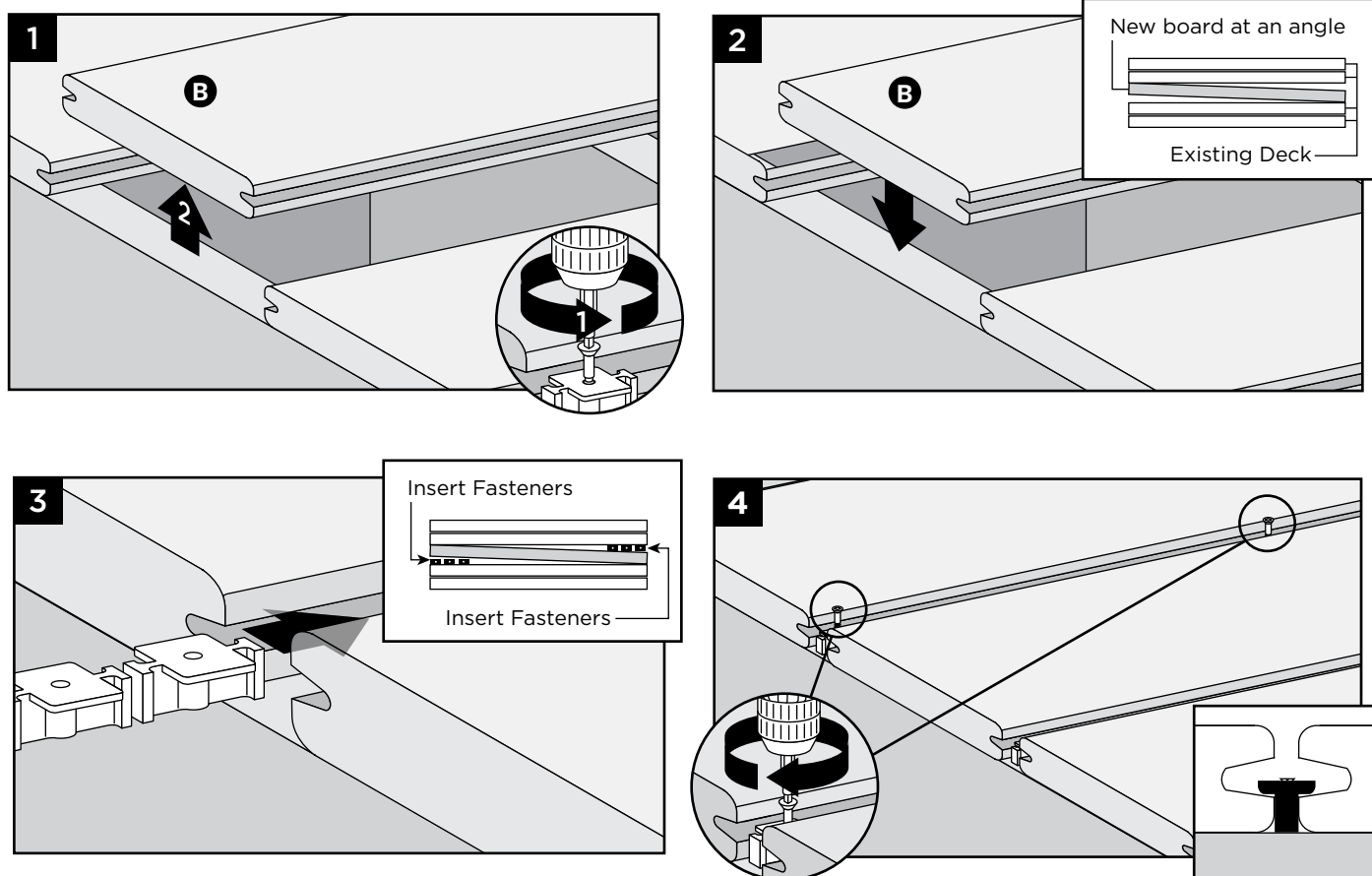
Metal Framing



Abutting Solid Objects



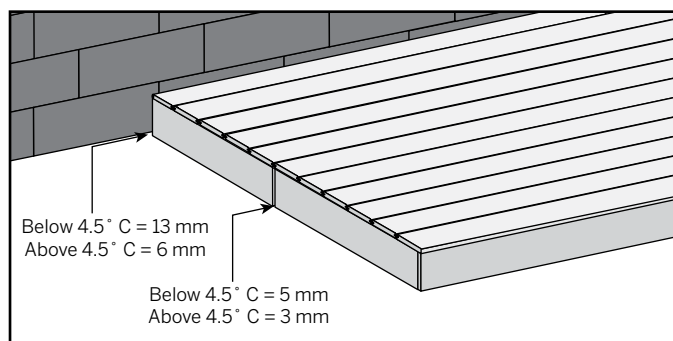
REPLACING TREX BOARDS INSTALLED WITH TREX HIDEAWAY UNIVERSAL FASTENERS



INSTALLING TREX FASCIA AND GAPPING

Trex Fascia utilized around the perimeter of a deck must be gapped with the same requirements as Trex decking to allow for air flow and expansion/contraction of the fascia.

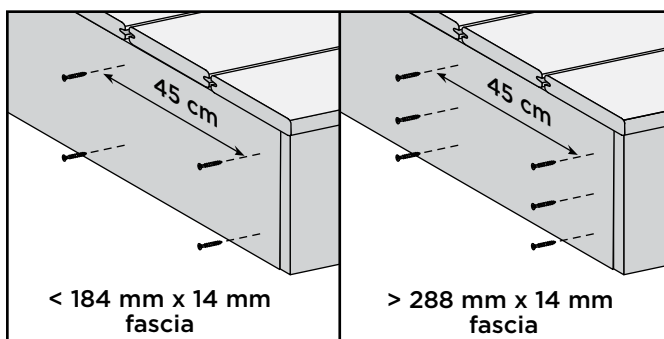
The fascia gapping requirements are as follows:



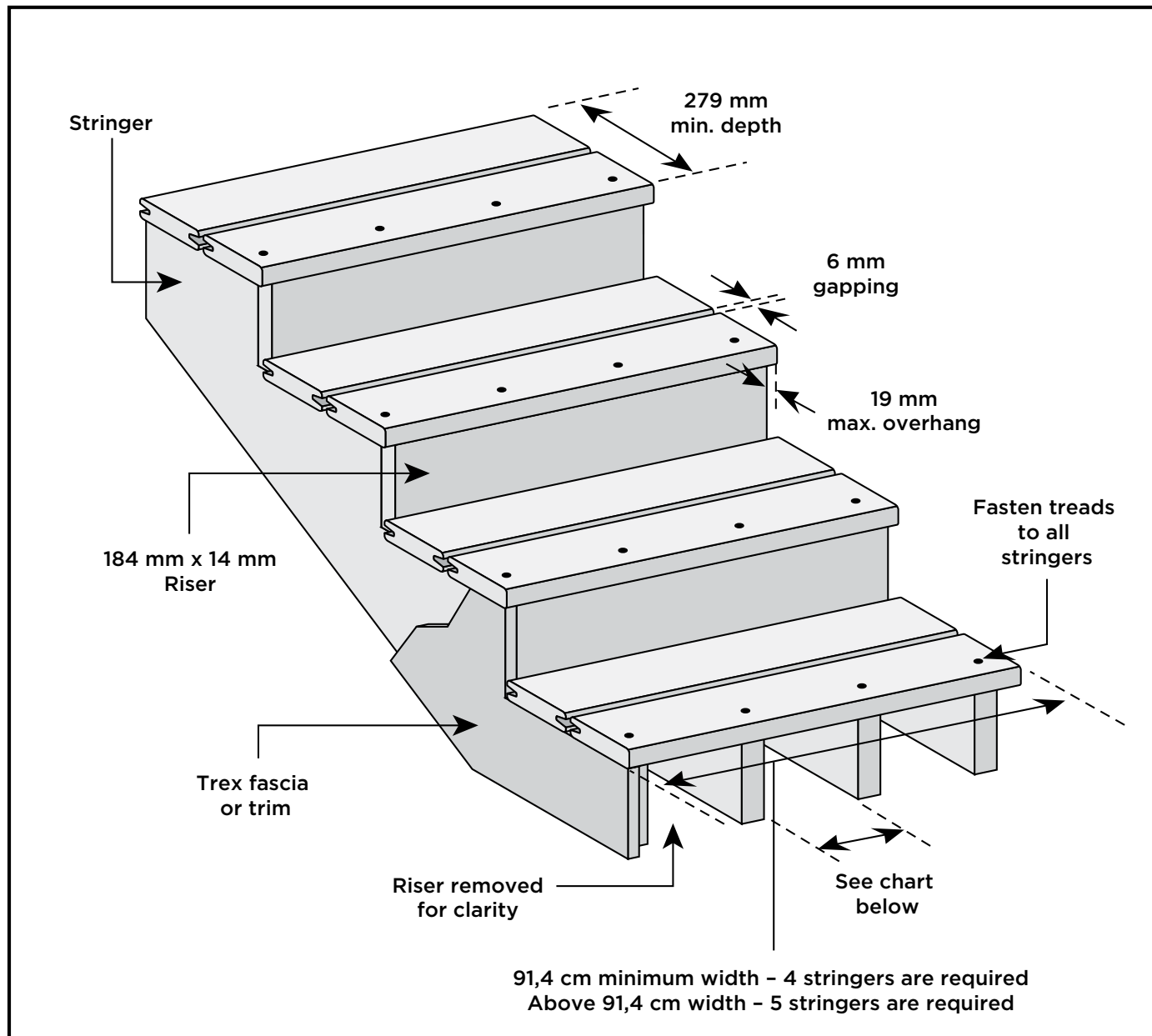
When Using Approved Fascia Fasteners:

NOTE: The fasteners listed below can only be used with 184 mm x 14 mm or 288 mm x 14 mm fascia product, and cannot be used with decking product that is being used as fascia trim or stair risers.

Trex recommends the use of Starborn® Deckfast® Fascia System or SplitStop™ Fascia Screws.



SPANNING REQUIREMENTS FOR TREX STAIRS

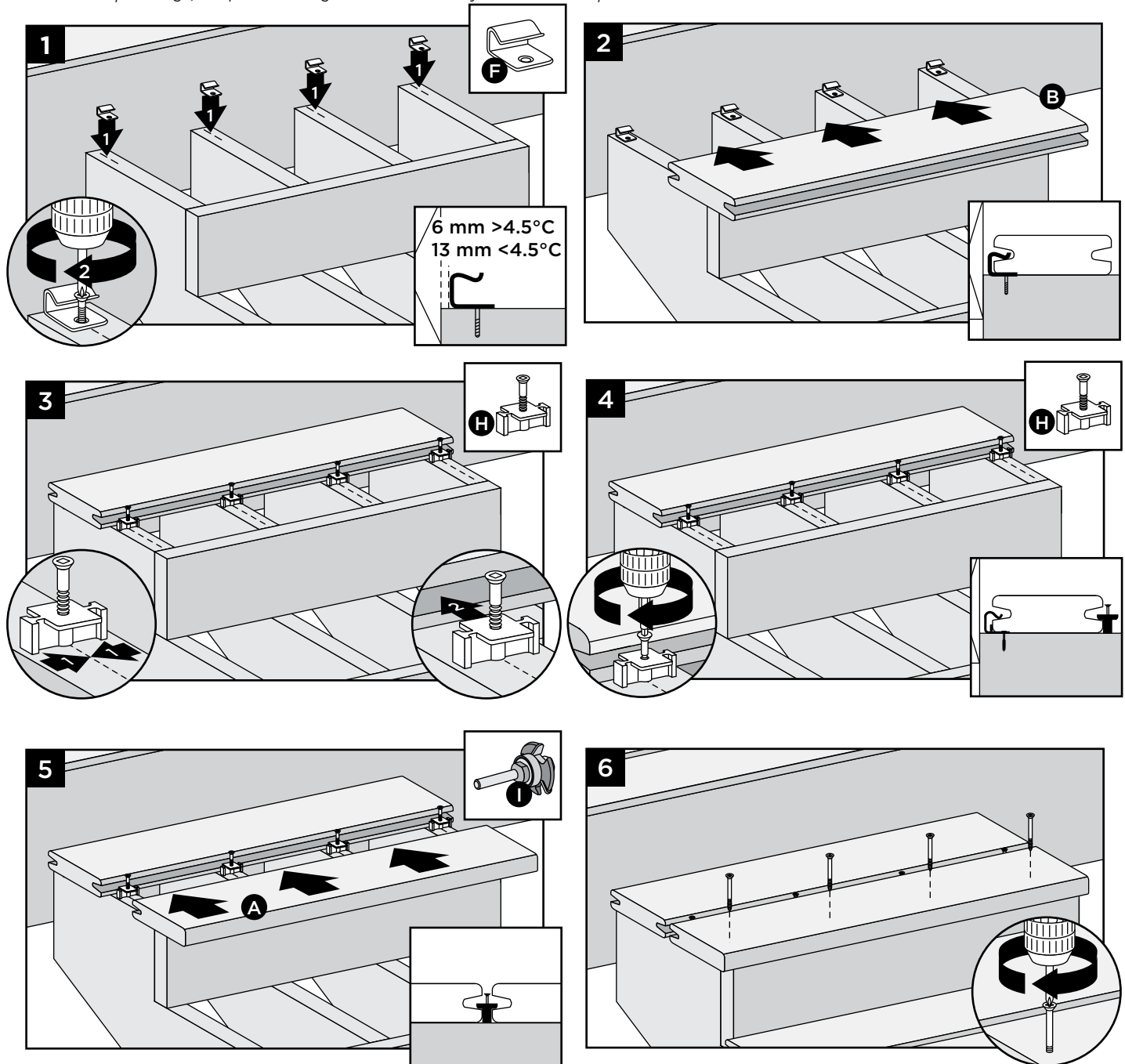


MAXIMUM SPACING OF STAIR JOISTS (Centre-to-Centre)

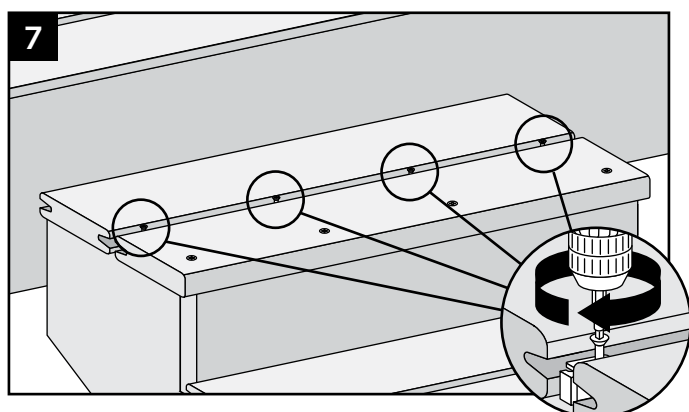
For approved AU spans, refer to <https://au.trex.com/trex-owners/downloads/> and view detailed span tables provided by SOTO Engineering located under Evaluation Service Reports.

INSTALLING TREX STAIR TREADS INSTALLED WITH TREX HIDEAWAY HIDDEN FASTENING SYSTEMS

NOTE: Use square-edge, composite decking boards and manually rout these on required sides to allow for use with hidden fasteners.



Route one side of board (A).





BACK
decking: Trex Transcend® in Spiced Rum

FRONT
decking: Trex Transcend® in Island Mist



The World's #1 Decking Brand

FIND US ON



Visit **au.Trex.com** or call **1-800-BUY-TREX**

© 2019 Trex Company, Inc. All rights reserved. Trex®, the Trex logo, Trex Transcend®, Trex Enhance®, Trex Select®, Trex Hideaway®, Trex Elevations®, Trex® Outdoor Lighting™, Trex Blade™, Trex® Landscape Lighting™, Trex® Outdoor Kitchens™, Trex Signature®, Trex® Spiral Stairs™, Trex® Deck Lighting™, Trex® RainEscapes®, Trex® Pergola™, TrexPro®, Trex® LatticeWorks™ and Trex® Cornhole™ are either federally registered trademarks, trademarks or trade dress of Trex Company, Inc., Winchester, Virginia or its licensees.

